



SOVEREIGN



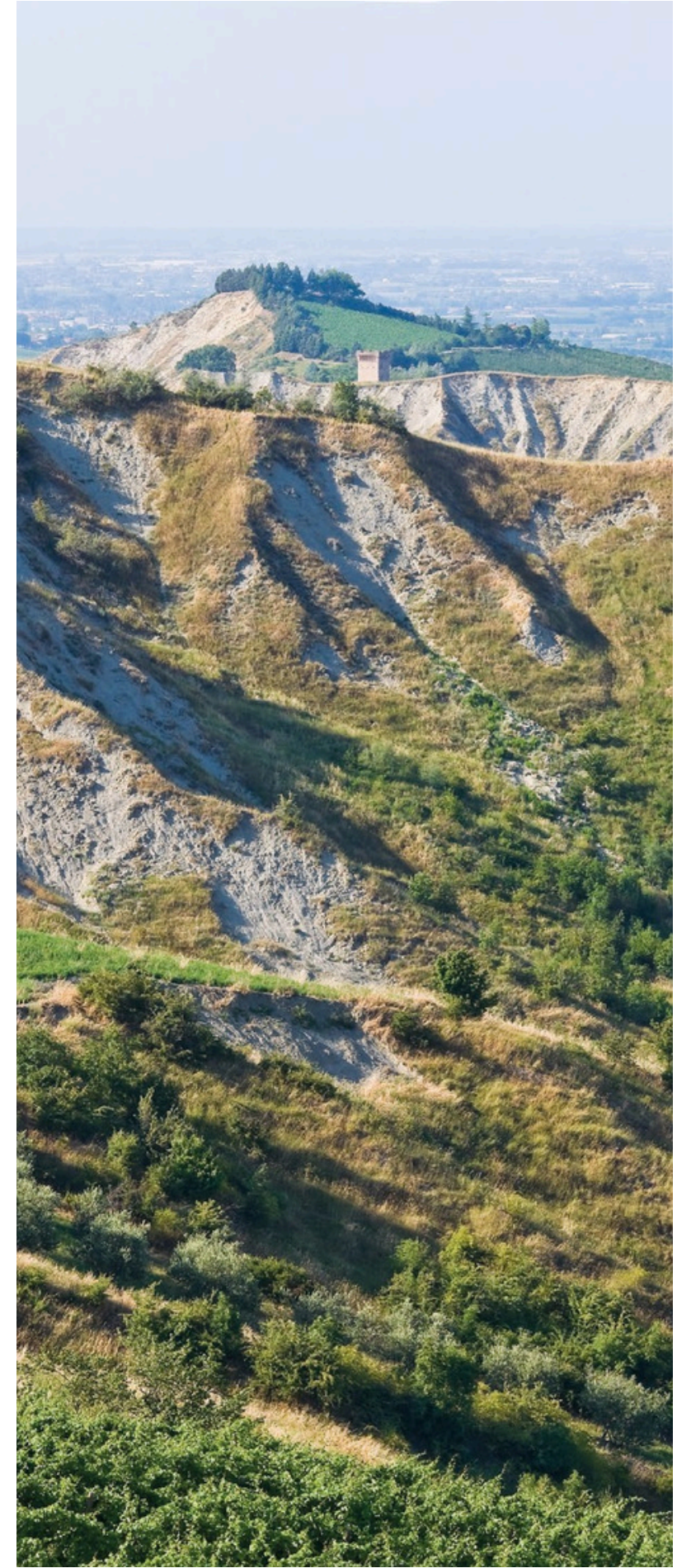
TOWN &
COUNTRY
SURFACES

Innovators since 1969. The Via Emilia. Crossroads of cultures, place of encounters and discussions, thousand-year-old laboratory of ideas. It is between Bologna and Faenza that was born in 1969. Since then, the principles that have guided our path are authentic passion for the ceramic material and an eye that is always open to beauty and innovation.





Respecting the environment. A real commitment, confirmed by our daily choices and certifications. **Efficiency and thermal recovery** through the reuse of energy plant exhaust fumes, cooling water heat, 100% of raw and cooked waste. All our products contain recycled material. **Reduced methane consumption**, as hot fumes from the new Continua+ line flow into the dryer, reducing fuel consumption. **80% autonomy in electricity** thanks to 2.5 MW from cogeneration plant. **Reduced water consumption** due to dry grinding lines and 100% wastewater recovery.



SOVEREIGN

The SOVEREIGN collection celebrates the majesty of iconic palaces and monuments that have been bearing witness to centuries of Mediterranean history. The authenticity of limestone from prestigious Italian quarries is captured in delicate colours and traces that tell of millennia of transformations and refined beauty. Six elegant shades, from bright PEARL to deep EMBER, combine tradition and modernity to achieve solutions that dialogue perfectly with contemporary design, in three different finishes and multiple sizes. Thanks to the innovative SurfacePro technology, the clever use of digital PEARLS amplifies the visual depth of surfaces, while the use of ceramic ink achieves a sinking effect with three-dimensional veins of surprising harmony. The result is a textured and realistic surface that invites tactile discovery and visual contemplation.

PALETTE

PEARL

OPALINE

KASHA

ARGENTUM

PEWTER

EMBER

LEVIGATO+

Our polished products have high standards of brilliance and graphic depth. Absolute levels of excellence have been achieved thanks to the introduction of the Continua+ line and the total use of extraordinarily transparent dry grits. The graphics are enhanced to the maximum and a cutting-edge compaction process allows for exceptional flatness and sharpness. The result: precious polished surfaces that give off wonderful brightness.

SAFE TECHNOLOGY

[SAFE] R11 A+B+C
technology

Anti slip, soft touch, easy to clean, anti reflex. Safe Technology revolutionizes the world of ceramics with a new technology that uses spherical nanograins to achieve high adhesion products that are surprisingly soft and natural to the touch. A perfect synthesis of aesthetics and performance that, thanks to the high dynamic coefficient of friction R11 A+B+C, makes the surfaces suitable for use in every part of the home, for interiors and exteriors in continuity. The characteristics of the nanospheres maximize the graphics and prevent dirt from settling deeply, facilitating cleaning and maintenance. The result is an incredibly realistic finishing, the most appreciated among designers, that provides high hygienic and non-slip performance even in wet conditions.





MAXIMA

Large formats, room for imagination. The charm of luxury, the pleasure of boundless choice. Seductive graphics and luxurious designs: presents its exclusive selection of surfaces in the large 120x280 format, for spaces and architecture to be designed in a creative and distinctive way. The only limit is your imagination. The range of over 70 colours, available in various finishes and surfaces, offers unprecedented visual continuity thanks to less joints and an extraordinary aesthetic result. New stylistic possibilities emerge from our most iconic collections: the highest ceramic technology is made available to the most demanding design world, for a constantly evolving architecture.

PEARL

SOVEREIGN PEARL 120x120 48"x48"
Matt, SOVEREIGN PEARL 120x120
48"x48" Safe





↑ SOVEREIGN PEARL 120x120 48"x48" Lev SOVEREIGN PEARL 120x280 48"x111" Matt, Iskra Ceppo di Grè 120x120
 <-- 48"x48" Safe, Iskra Ceppo di Grè 120x280 48"x111" Matt



OPALINE

SOVEREIGN OPALINE 120x280 48"x111" Lev, Othello Clay 24x165
9"x65" Matt



SOVEREIGN



SOVEREIGN OPALINE 120x120 48"x48" Matt, Iskra Ardesia Stone 120x280
48"x111" Lev



↑ SOVEREIGN OPALINE 120x120 48"x48" Safe SOVEREIGN OPALINE 120x120
 <-- 48"x48" Lev, Concrete Art Tortora 120x280 48"x111" Matt

KASHA

SOVEREIGN KASHA 120x120 48"x48" Safe, SOVEREIGN OPALINE 120x280 48"x111" Matt





SOVEREIGN KASHA 120x120 48"x48"
Lev



↑ SOVEREIGN KASHA 120x280 48"x111" Lev SOVEREIGN KASHA 120x120 48"x48" Matt, SOVEREIGN KASHA Mosaico 4,7x4,7 30x30
 <-- 12"x12" Matt, Omnia Camouflage 120x280 48"x111" Matt

ARGENTUM

SOVEREIGN ARGENTUM 120x120 48"x48" Matt, 120x280
48"x111" Matt





SOVEREIGN ARGENTUM 120x120 48"x48" Matt, Concrete Art Grigio 120x280 48"x111" Matt



↑ SOVEREIGN ARGENTUM 120x120 48"x48" Lev SOVEREIGN ARGENTUM 120x280 48"x111" Lev, Concrete Art Bianco
 <-- 120x120 48"x48" Matt, Concrete Art Bianco 120x120 48"x48" Safe

PEWTER

SOVEREIGN PEWTER 120x280 48"x111" Lev, 120x120
48"x48" Matt





SOVEREIGN PEWTER 120x120 48"x48" Safe, 120x280 48"x111" Matt, Mosaico 4,7x4,7 30x30 12"x12" Matt



↑ SOVEREIGN PEWTER 120x120 48"x48" Matt SOVEREIGN PEWTER 120x120
 <-- 48"x48" Lev, Concrete Art Bosco 120x280 48"x111" Matt

EMBER

SOVEREIGN EMBER 120x120 48"x48" Lev







↑ SOVEREIGN EMBER 120x280 48"x111" Matt
 <-- SOVEREIGN EMBER 120x120 48"x48" Matt

TO MATCH

PEARL

Ivory

KASHA

ARGENTUM

PEWTER

EMBER

SOVEREIGN

Matching proposals to enhance design and customization in every project.

Matching proposals.

PEARL

- Iskra Ceppo di Grè
- SOVEREIGN PEWTER
- Concrete Art Ocra
- Opera Clay

OPALINE

- Concrete Art Tortora
- Iskra Ardesia Stone
- Othello Clay
- LeGarage Sand

KASHA

- Omnia Camouflage
- SOVEREIGN IVORY
- Concrete Art Caramel
- Othello Brown

ARGENTUM

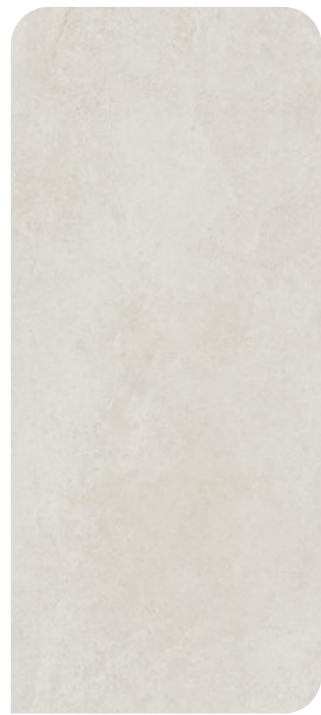
- Concrete Art Grigio
- Omnia J'Adore
- Alma Dolomite
- Antique Walnut

PEWTER

- Concrete Art Bosco
- Omnia Camouflage
- Opera Gold
- LeGarage PEWTER

EMBER

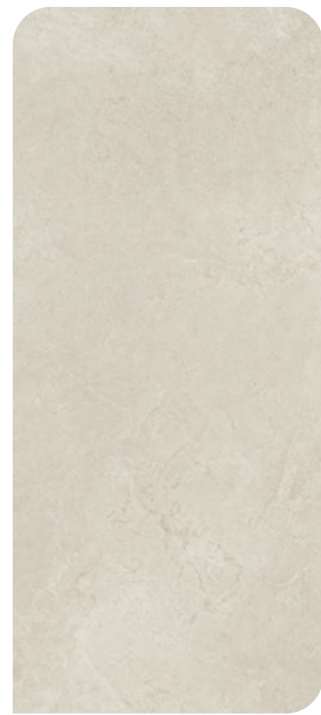
- SOVEREIGN PEARL
- Concrete Art Antracite
- Iskra Orobico
- Othello Oak



PEARL

Fugaconsigliata / Suggested grouting

- Mapei Ultracolor Plus 103 Bianco Luna
- Kerakoll Fugabella KK 02



IVORY

Fugaconsigliata / Suggested grouting

- Mapei Ultracolor Plus 111 Grigio Argento
- Kerakoll Fugabella KK 64



KASHA

Fugaconsigliata / Suggested grouting

- Mapei Ultracolor Plus 123 Bianco Antico
- Kerakoll Fugabella KK 79



ARGENTUM

Fugaconsigliata / Suggested grouting

- Mapei Ultracolor Plus 110 Manhattan 2000
- Kerakoll Fugabella KK 06



PEWTER

Fugaconsigliata / Suggested grouting

- Mapei Ultracolor Plus 112 Grigio Medio
- Kerakoll Fugabella KK 68

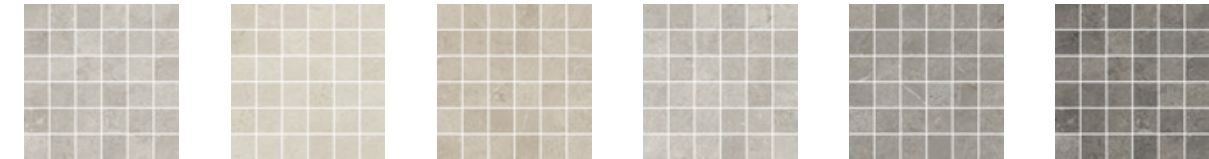


EMBER

Fugaconsigliata/ Suggested grouting

- Mapei Ultracolor Plus 113 Grigio Cemento
- Kerakoll Fugabella KK 69

Mosaico 4,7x4,7
30x30 12"x12"



PEARL IVORY KASHA ARGENTUM PEWTER EMBER

Formati / Sizes

	120x280 48"x111"		120x120 48"x48"			60x120 24"x48"			60x60 24"x24"			30x60 12"x24"			Mosaico 4,7x4,7 30x30 12"x12"	
	Lev	Matt	Lev	Matt	Safe	Lev	Matt	Safe	Lev	Matt	Safe	Lev	Matt	Safe	Lev	Matt
KASHA	104660	104654	104426	103102	103150	103132	103114	103156	103138	103120	103162	103144	103108	103168	106013	106007
EMBER	104661	104655	104427	103103	103151	103133	103115	103157	103139	103121	103163	103145	103109	103169	106014	106008
PEWTER	104662	104656	104428	103104	103152	103134	103116	103158	103140	103122	103164	103146	103110	103170	106015	106009
IVORY	104663	104657	104429	103105	103153	103135	103117	103159	103141	103123	103165	103147	103111	103171	106016	106010
ARGENTUM	104664	104658	104430	103106	103154	103136	103118	103160	103142	103124	103166	103148	103112	103172	106017	106011
PEARL	104665	104659	104431	103107	103155	103137	103119	103161	103143	103125	103167	103149	103113	103173	106018	106012
PZ x BOX	1		2			2			3			6			6	
MQ x BOX	3,36		2,88			1,44			1,08			1,08			0,54	
KG x BOX	48,72		61			30,50			22,50			22,50			10,20	
BOX x PL																
MQ x PL	20		18			36			32			23			60	
KG x PL	67,20		51,84			51,84			34,56			43,20			32,40	
	974,40		1098			1098			720			880			612	

Decori / Decors

Mosaico 4,7x4,7 30x30 12"x12"	
Lev	Matt
106013	106007
106014	106008
106015	106009
106016	106010
106017	106011
106018	106012
6	
0,54	
10,20	
60	
32,40	
612	

Per motivi tecnici i pesi e imballi possono variare / For technical reasons the weights and packaging info may vary.

EN

To achieve the maximum aesthetic effect of multi-format modular flooring, we recommend selecting tiles from different boxes and creating a 4 m² test pattern before starting in order to check the overall result. Shade variation is a special tile feature. In general, a joint of approximately 4/5 mm is recommended, but since the tiles are multi-size it is still preferable to make adjustments when laying the pieces in order to best reproduce the effect of natural material. For the laying of flooring and wall cladding having a side greater than 60 cm, recommends the use of leveling spacers (wedges), which allow the surface to be perfectly flat and to maintain the desired position of each tile, thus reducing installation times. For the laying of rectified products, we recommend the use of a self-levelling floor plaster and a joint of no less than 2 mm. For polished products, maximum caution is recommended during handling and laying, and, in particular, avoid rubbing the tiles against each other. After installation, lay cardboard sheets on the floor until all construction works have been completed. Tiles with polished or satin surface may, with time, undergo slight variations in color and gloss, which give them a natural distressed look. For all our products we recommend a quick post-grouting cleaning of surfaces using specific detergents. S.r.l. is not liable for defects resulting from the incorrect installation of materials.

In addition to the information provided in the laying instructions in the previous paragraph, before carrying out any work on the slab or its installation, it is necessary to check the conformity of the material and whether it is a good match for the colour tones present on the worksite. No complaints will be accepted regarding materials that are already finished and laid. For correct installation, at the moment of application the slab must respect all the requirements indicated in the relevant regulation, UNI 11493-1. If such requirements are not fulfilled, it is necessary to proceed with reparative measures. It is the responsibility of the designer or the project management to identify the product with the most appropriate friction coefficient based on its planned use. The screed must be perfectly flat and guarantee resistance to compression according to the planned use, as indicated in current legislation. To prevent possible formation of efflorescence, the screed must present a humidity value below 3%. Before proceeding with the laying phase, the screed must be clean, and any possible cement residues, crumbling sections or parts not completely attached must be removed. Any cracks that may form after hygrometric shrinkage must be sealed before beginning the laying phase.

Slab handling and installation

During the preliminary checks on the construction site, it is also advisable to ensure that the slabs can be easily handled within the installation location. All slab formats exceeding 100 cm in both length and width

must be handled by 2 installers. For a correct slab handling, it is necessary to have available the suitable handling equipment from the moment the product is removed from the packaging. To ensure both the safety of the operators and the integrity of the material, the slabs must be handled and installed with the use of handling bars with suction cups. The special handling trolleys are ideal for use on site as a “warehouse” for one or more slabs, as well as for safely applying the adhesive on the back of the slab.

Slab cutting

Cutting operations must be performed on a flat, stable and level surface. We recommend using professional

cutting guides mounted on a scoring trolley. Once the slab has been removed from the packaging and placed

on the work surface, mark the size to be cut at both ends. Position and lock the cutting guide, taking into account the distance of the cutting blade. Etch the ends of the slab for about 5 cm by pushing the scoring trolley from the inside out, then etch the slab, making sure that you continue to exert pressure and move the

trolley forward along the entire length of the cut. Move the slab in order to bring the incision line out of the work surface by about 5/10 cm. Remove the incision guide and position the special pliers over the engraved

line and exert a light and progressive pressure downwards in order to complete the cutting operation. This operation will be very simple as products are tension-free and, therefore, easy to work with. At this point, you can proceed with finishing, which must be carried out using the appropriate diamond pads or, alternatively, abrasive resinous discs.

We recommend completing the installation by the wet cutting or etching and splitting method. Avoid dry cutting with motorized tools during installation. Improper installation techniques can expose the installer to harmful dust.

L-cuts / Rectangular holes / Edging

Once the portion to be removed has been traced on the slab, it is advisable to drill 6/8 mm diameter holes at the junction point of the lines with wet or dry diamond core bits.

Join the holes using an angle grinder equipped with a diamond disc (max. diameter 125 mm).

Gluing

slabs require the use of the double coat technique, i.e. the glue must be applied both on the substrate and on the back of the slab. We recommend using a C2F (E) S1/S2 class full-bed cement-based powder adhesive. Make sure that the surface to be coated is even, flat, free of dust and grease, and remove any dust that may come into contact with the slabs. Use an 8 mm toothed spatula to apply the adhesive on the surface to be covered, by straight rather than circular movements. Make sure that the teeth of the toothed spatula are never smaller than 5 mm (taking into account that the sum of the spatulas used for the substrate and the slab must be between 13 and 14 mm). To ensure the perfect installation of products, any air bubbles that may form between slab and adhesive must be flattened by vibration until an “even and full bed” of glue is obtained. To achieve this goal, we recommend that you use a manual rubber beater or an electric tile beater. For large-format slabs, we recommend using leveling spacers, making sure that the layer of adhesive between slab and screed is at least 4 mm, in order to avoid adhesive-free bubbles. The minimum recommended joint, in relation to the position of the expansion joints, is 2 mm. In the case of walls and floors in contact to be cladded in ceramic slabs, it is essential to comply with this minimum width to ensure a perfect result over time. For covering, it is possible to create lower joints based on the appropriate technical checks to be carried out on site. The joints must be filled for at least 2/3 of the thickness with the appropriate sealant; therefore, it is necessary to ensure that no adhesive residues are inside the joints.

MORE INFO:



Town & Country Surfaces
230 Fifth Avenue
Suite 1714
New York NY 10001

General Inquiries:
info@tncsurfaces.com
Phone: 212-679-0312

