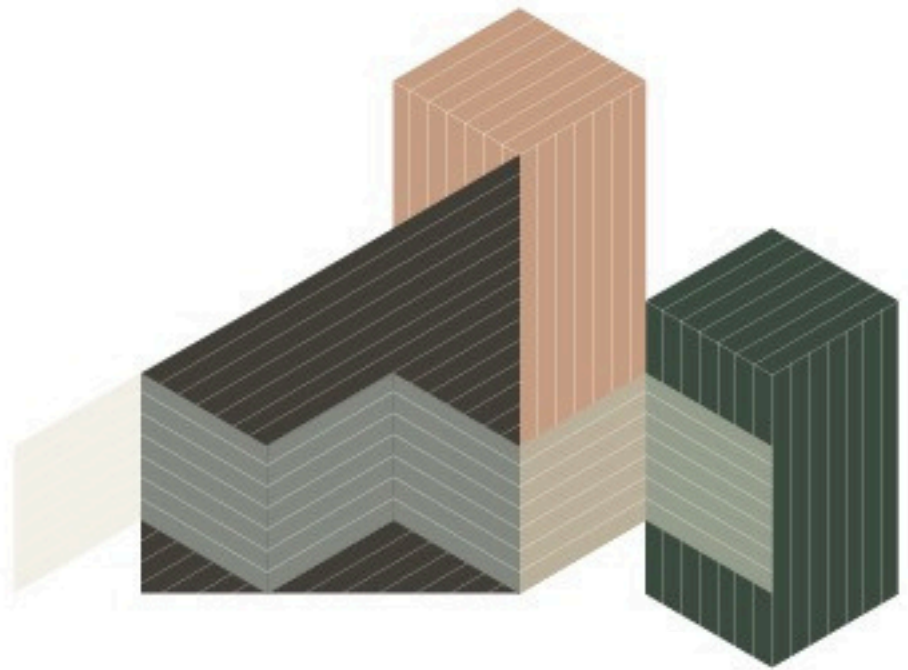
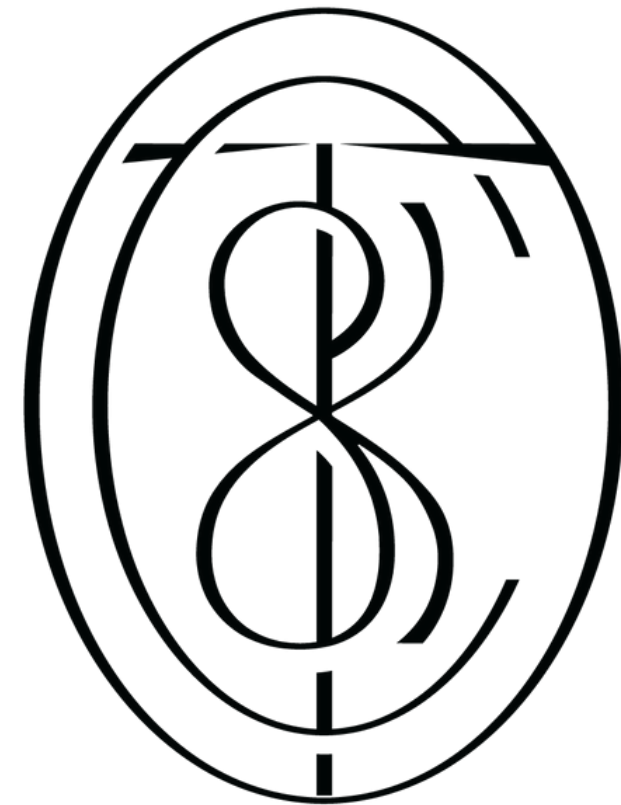


TOWN &
COUNTRY
SURFACES



Pike



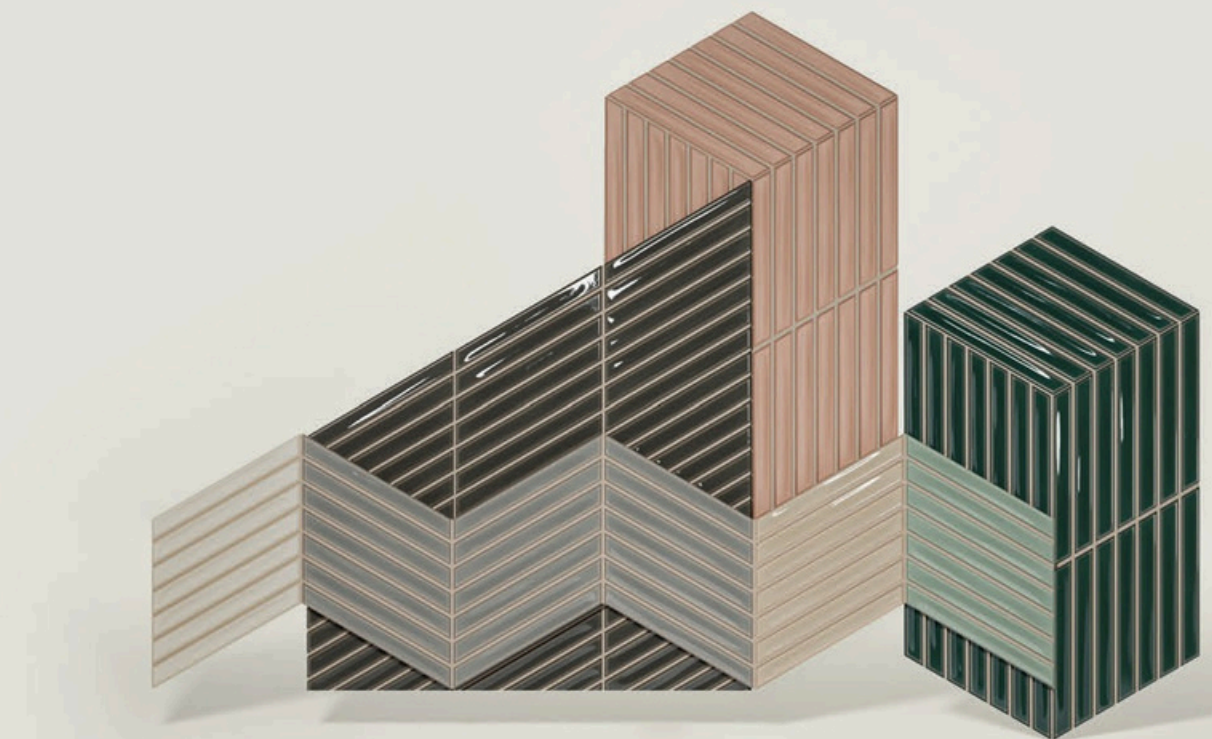
Pike

What if we reinvent the Sweet Bars Collection?
Now we're betting on diagonals, with a completely new format,
fresh colors and matt and gloss finishes.

Turning ideas into reality!

*¿Y si reinventamos la colección Sweet Bars?
Ahora apostamos por las diagonales, con formato completamente nuevo,
colores frescos y acabados en mate y brillo.
¡Transformando ideas en realidad!*

01. SIZES, COLOURS AND FINISHES / FORMATOS, COLORES Y ACABADOS	<i>pag. 4</i>
02. GET INSPIRED / INSPIRATE	<i>pag. 6</i>
03. LAYOUTS / COLOCACIONES	
04. TECHNICAL FEATURES / CARACTERÍSTICAS TÉCNICAS	<i>pag. 26</i>
05. PACKING	<i>pag. 28</i>
06. PRICE CODE / CÓDIGO DE TARIFA	
07. TECHNICAL DRAWINGS / DIBUJOS TÉCNICOS	<i>pag. 29</i>
08. RECOMMENDATIONS / RECOMENDACIONES	<i>pag. 29</i>
	<i>pag. 30</i>
	<i>pag. 31</i>





Chevron

15x25,9 cm / 6"x10.2"

W \$ W32



Talc Matt



Earth Matt



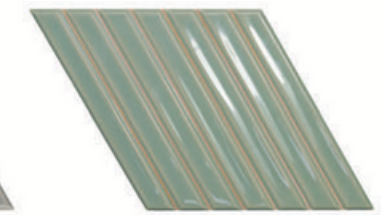
Deep White



Greige



Mineral Grey



Fern



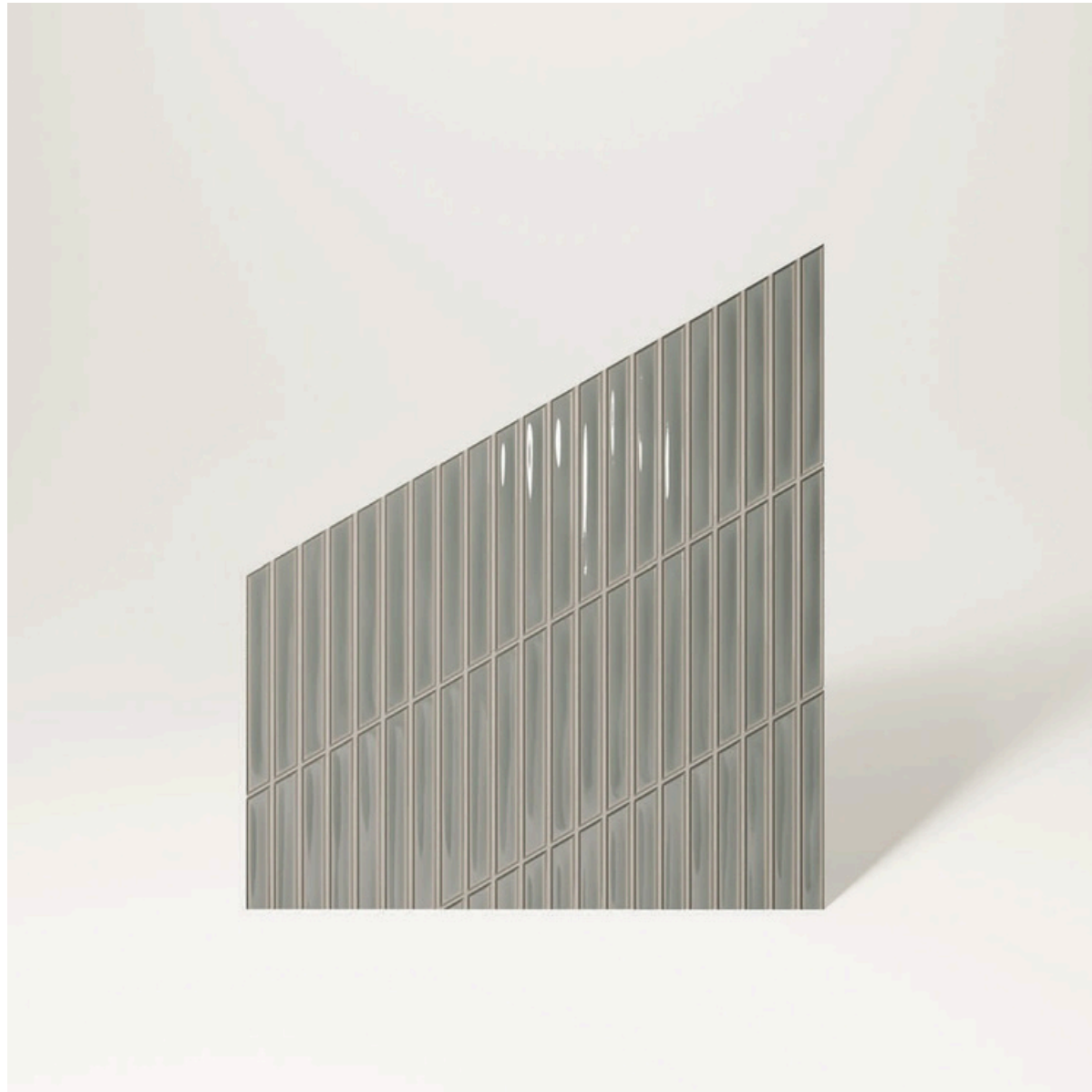
Peacock Blue



Royal Green



Ebony



Chevron B Mineral Grey
Floor: Halo XXL Dawn (Halo Collection)





◀ **Chevron** B Deep White 55,55%, B Deep White 22,22%, A Fern 11,11% & B Fern 11,11% *Front Wall: Chevron* A Fern 66,66% & B Fern 33,33% *Floor: Strip Concrete Light Grey (Love Affairs Collection)*

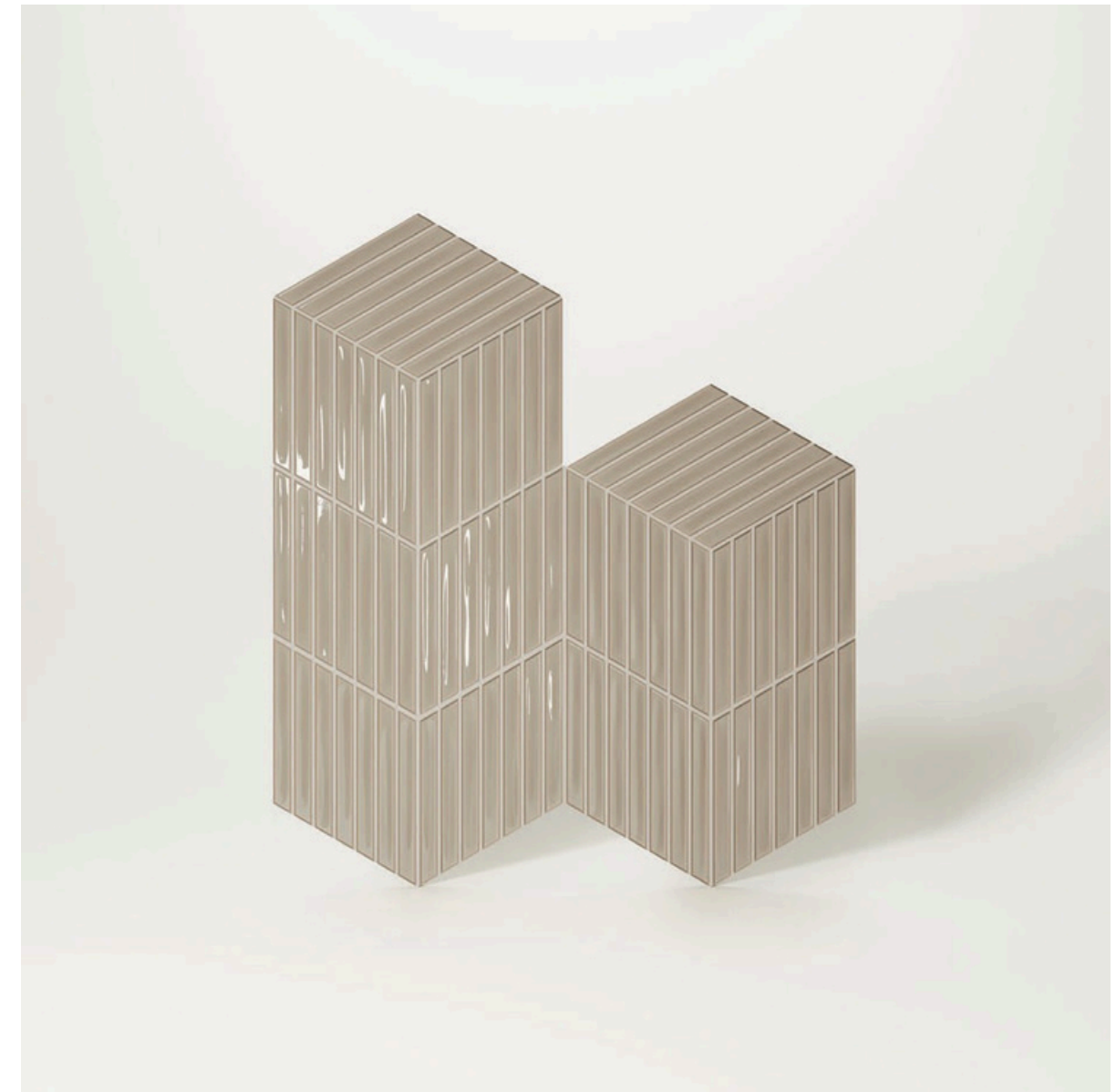
▲ **Chevron** A Fern 66,66% & B Fern 33,33%



Chevron A Royal Green Front Wall: *Fayenza Square Royal Green (Fayenza Collection)*



Pike



Chevron A Greige 46,5% & B Greige 53,5% Floor: Halo S Night & Halo XXL Night (Halo Collection) Wall: Fayenza Square Greige (Fayenza Collection)

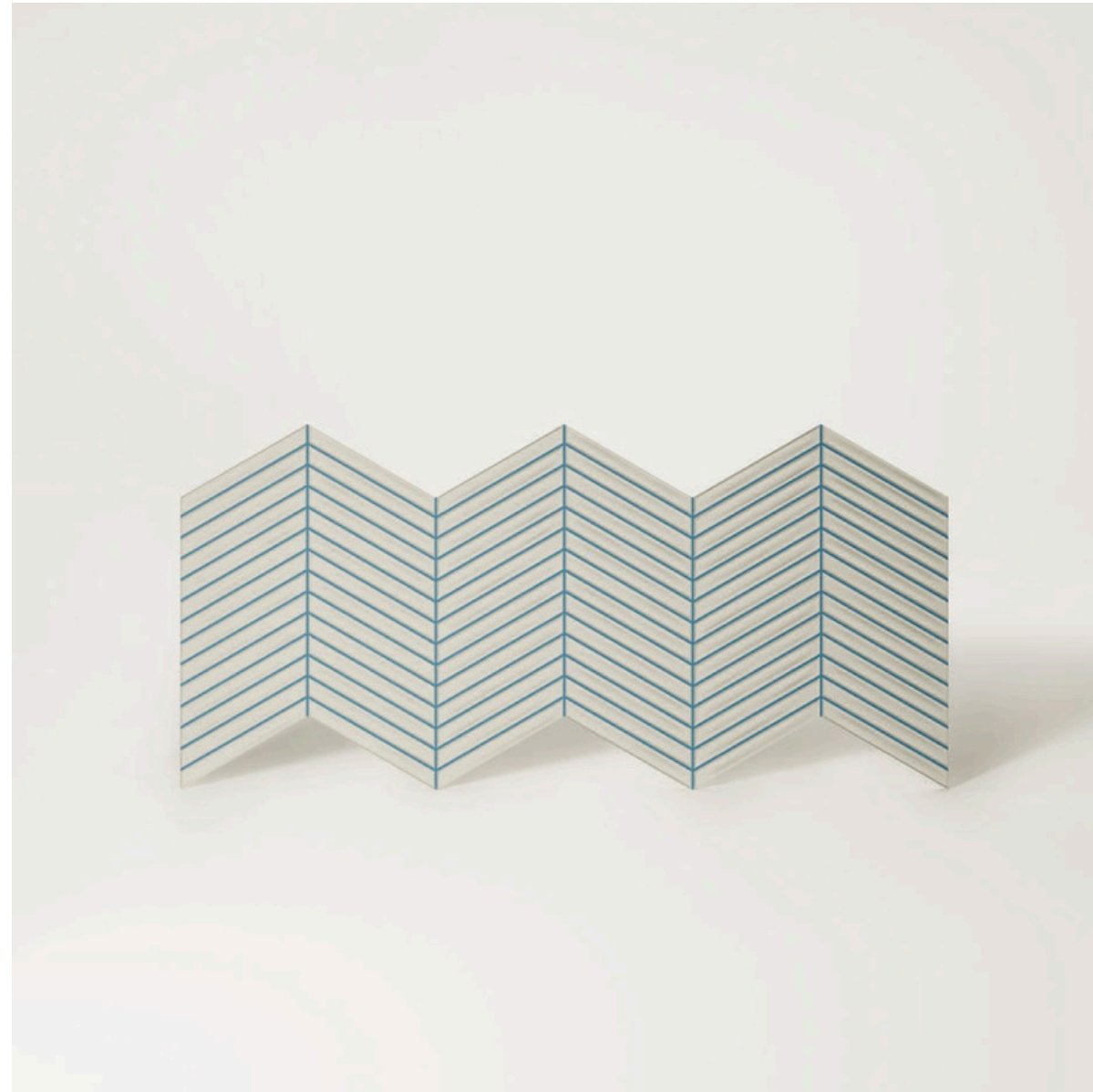


Chevron A Earth Matt 50% & B Earth Matt 50%
Floor: Contempo Strip Oak (Love Affairs Collection)



◀ **Chevron** A Peacock Blue 30% & B Peacock Blue 70%
Table: *Fayenza Deep White (Fayenza Collection)* Floor:
Halo XXL Dawn (Halo Collection)

▲ **Chevron** A Peacock Blue 50% &
B Peacock Blue 50%



Chevron A Talc Matt 50% & B Talc Matt 50%





Chevron A Ebony 59% & B Ebony 41% *Lateral Walls:*
Fayenza Square Ebony (Fayenza Collection)



Chevron A Earth Matt 50% & B Earth Matt 50% Floor: Halo XXL
Noon (Halo Collection) Back Wall: IPN INOUT Sand & UPN INOUT
Sand (Icon Collection)

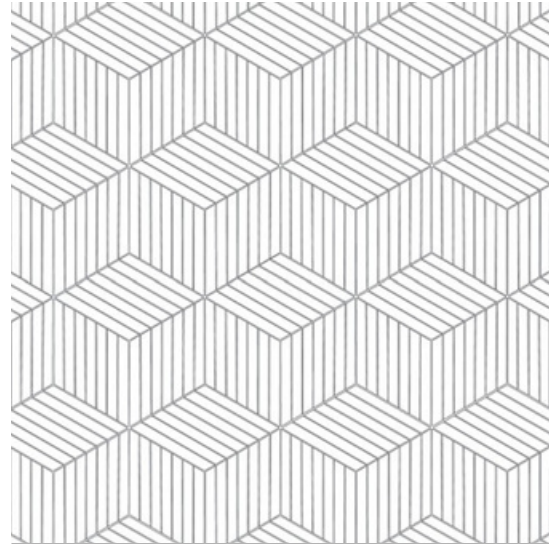




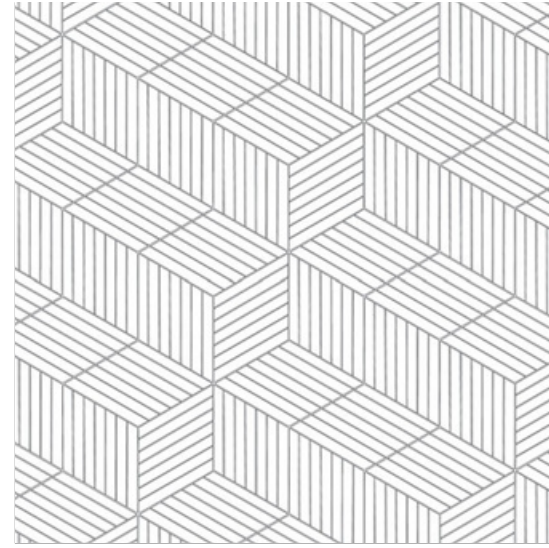
◀ **Chevron B** Deep White 58,4% & B Greige 41,6%

Floor: Halo XXL Dawn (Halo Collection)

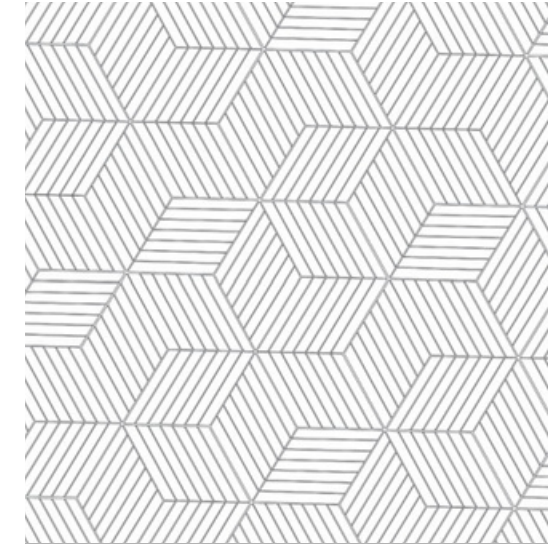
▲ **Chevron A** Deep White 25%, B Deep White 25%,
A Mineral Grey 25% & B Mineral Grey 25%



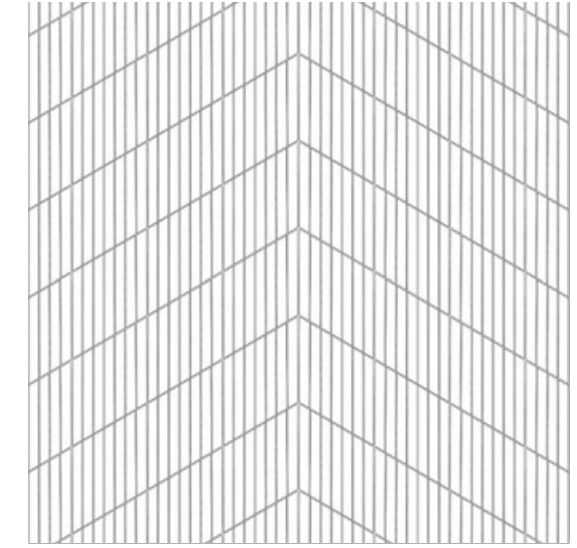
Chevron A - 66,66%
Chevron B - 33,33%



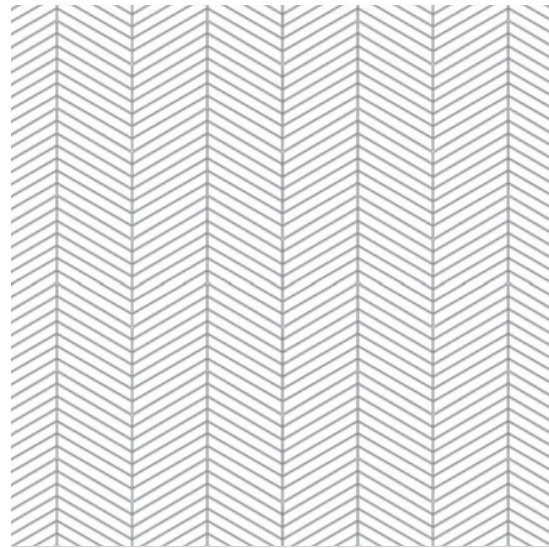
Chevron A



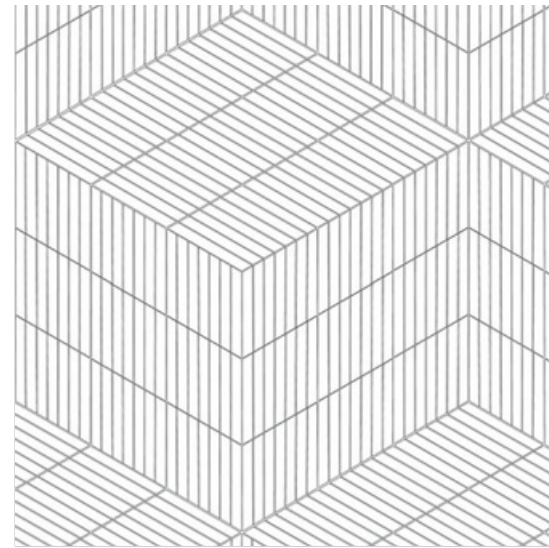
Chevron A - 59%
Chevron B - 41%



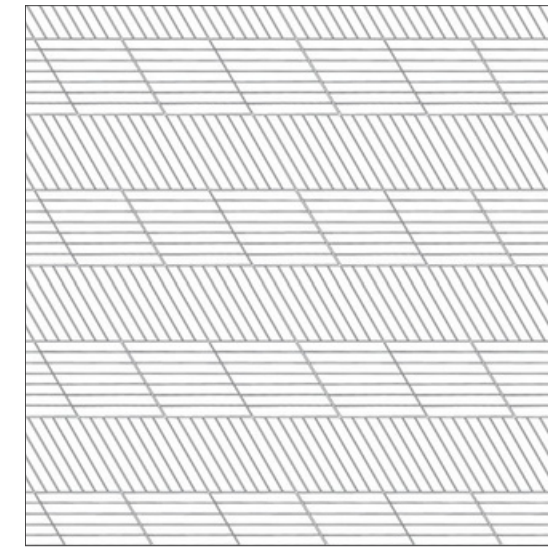
Chevron A - 50%
Chevron B - 50%



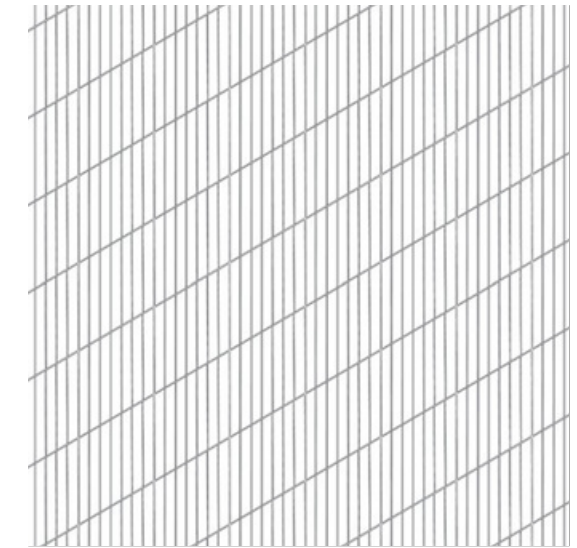
Chevron A - 50%
Chevron B - 50%



Chevron A - 66,66%
Chevron B - 33,33%





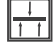






Chevron A - 50%
Chevron B - 50%



Chevron B

04. TECHNICAL FEATURES / INFORMACIÓN TÉCNICA

Technical features for Dry-Pressed ceramic tiles with water absorption BIII (Eb >10%)
 Características técnicas para las baldosas cerámicas prensadas en seco del grupo BIII (Eb >10%)

FEATURES / CARACTERÍSTICAS	SPECIFICATION / ESPECIFICACIÓN	NORMA
 Dimensional Features	Pike 150,0 mm +/- 0,75 mm x 258,5 mm +/- 1,30 mm	UNE-EN ISO 10545-2:2019
 Water absorption	Eb>10%	UNE-EN ISO 10545-3:2018
 Modulus of rupture and breaking strength	≥ 12 N/mm2 ≥ 600 N	UNE-EN ISO 10545-4:2019
 Crazing resistance	Pass	UNE-EN ISO 10545-11:1997
 Household products resistance	GA	UNE-EN ISO 10545-13:2017
 Chemical resistance	GHA	UNE-EN ISO 10545-13:2017
 Stain resistance	Class 5	UNE-EN ISO 10545-14:2017
 Tone variation	V2	-
 White body	-	-

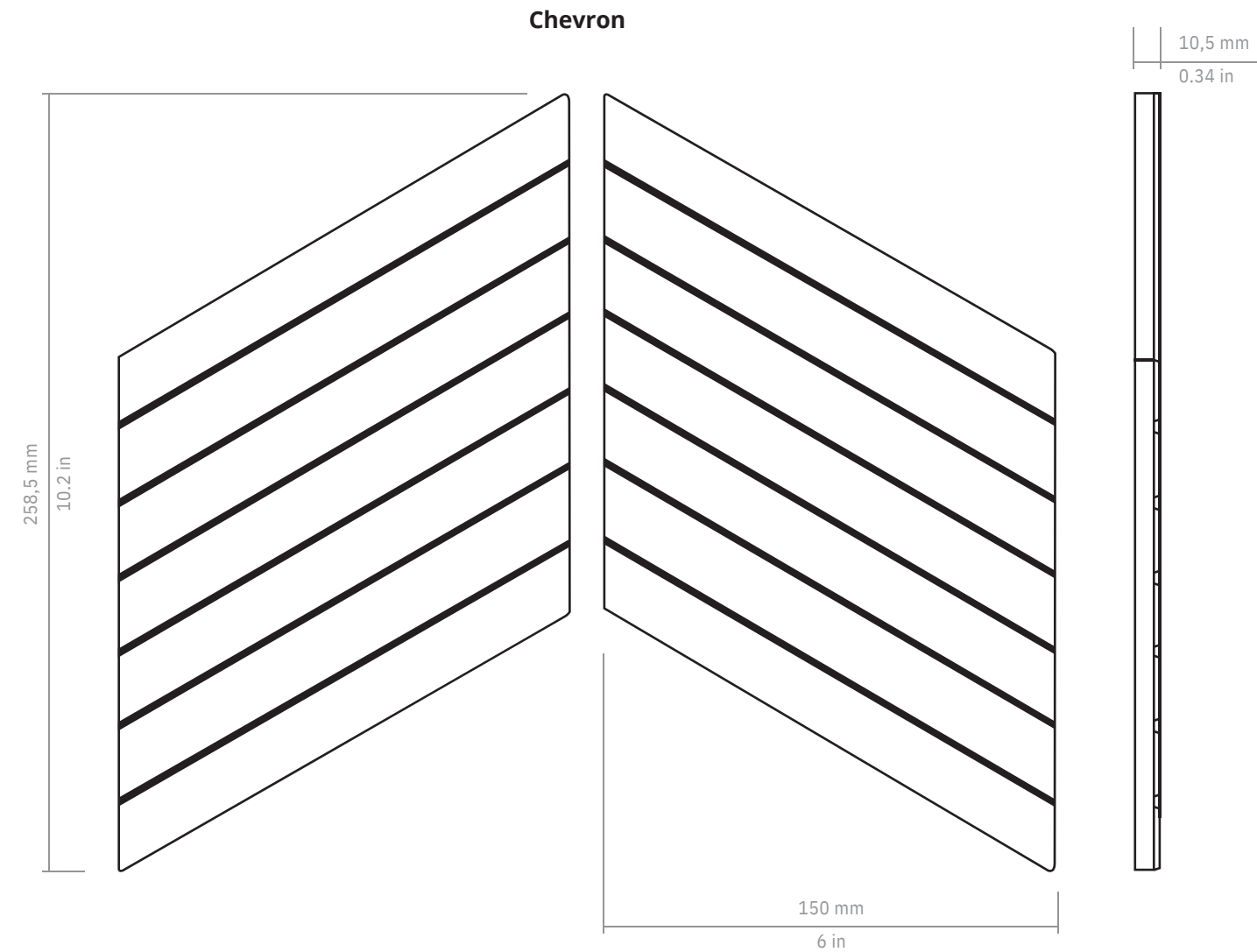
05. PACKING

Modelo	Formato (cm)	Piezas / Caja	Kg / Caja	m2 / Caja	Cajas / Palet	m2 / Palet
Chevron	15x25,9 cm	15	5,10 kg	0,291 m2	105	30,56 m2

Model	Format (in)	Pieces / Box	Lb/ box	sq ft / Box	Boxes / Pallet	sq ft / Pallet
Chevron	6"x10.2"	15	11.24 lb	3.132 ft2	105	328.86 ft2

06. PRICE CODE

MODEL / MODELO	PRICE CODE / CODIGO TARIFA
Chevron	W32

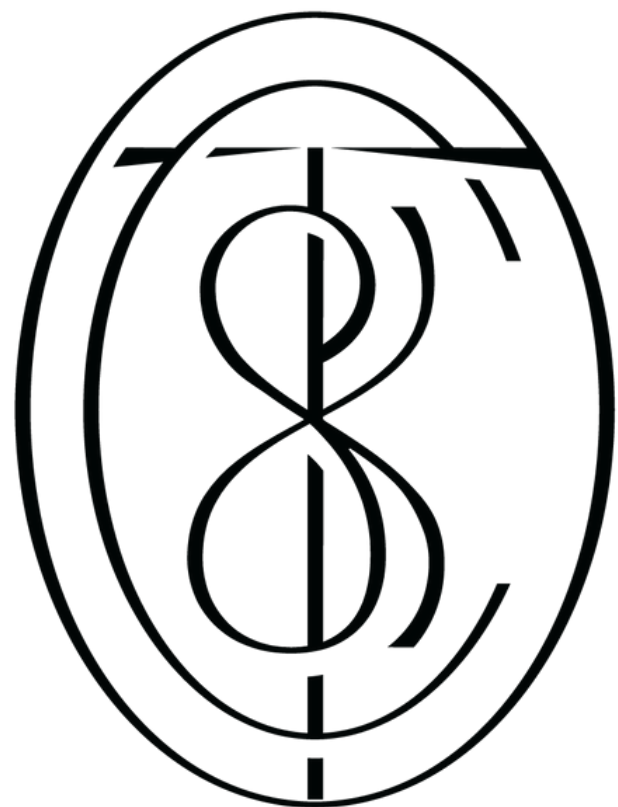


BEFORE INSTALLING THE PRODUCT

The surface where the product is being installed must be clean and level. It is recommended that the layout of the product is prepared before the final installation. Make sure you choose an adhesive apt for the area where the product is being installed. For installation on porous surfaces we recommend: Kerakoll Special® Eco, and for Non-porous surfaces: Kerakoll serie H40® Eco. The choice of quality grouting mortar is crucial. We recommend Kerakoll Fugabella® Color. (www.kerakoll.com)

TO ENHANCE YOUR T&C PRODUCT In order to obtain the maximum T&C effect, use 1,5 mm - 0.06 in spacers between the tiles to maintain an even installation over the whole surface. The colour of the grout should be as close as possible to the colour of your product. Once the area has been grouted, and before the grout dries, remove any excess material with a damp sponge. **MAINTENANCE** Maintenance free. Easy and practical to care for, due to the high standard of technical characteristics in each T&C ceramic product. Avoid abrasive or acidic cleaning products. It is recommended to clean with clear water.

ANTES DE LA COLOCACIÓN Preparar la superficie sobre la que se va a colocar tu producto T&C. Debe estar limpia y aplomada. Se recomienda plantear la colocación, previo a su instalación. Elegir el material de agarre en función de las características de la superficie. Se recomienda para colocación general en superficies porosas: Kerakoll special® Eco, y para superficies no porosas como el pladur: Kerakoll serie H40® Eco. Es importante la elección de un material de rejunte de calidad. T&C recomienda utilizar el material de rejunte Kerakoll fugabella® Color (www.kerakoll.com), cuyas características son especialmente adecuadas para este revestimiento. **PARA ENSALZAR EL ASPECTO DE TU PRODUCTO T&C** Se recomiendan separadores de 1,5 mm para colocar las piezas y conseguir de esta forma un aspecto T&C óptimo. También es aconsejable que el color de rejuntado sea similar al color del producto elegido. Una vez rejuntado el producto, y antes de que se endurezca, retirar el material sobrante de rejuntado con una esponja mojada en agua. **MANTENIMIENTO** Práctico y sencillo de limpiar, dadas las excelentes características técnicas del producto T&C, tan sólo es necesario un cuidado rutinario, evitando la utilización de productos abrasivos o ácidos. Se recomienda limpiar exclusivamente con agua limpia.



MORE INFO:



Town & Country Surfaces
230 Fifth Avenue
Suite 1714
New York NY 10001

General Inquiries:
info@tncsurfaces.com
Phone: 212-679-0312

