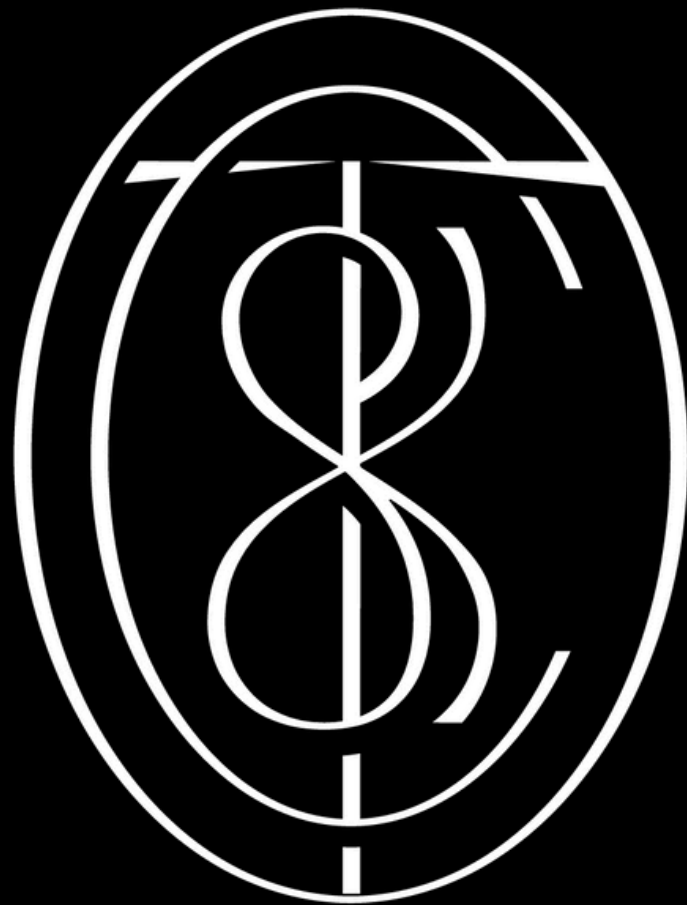


T-537 Panel  
Catalogue



TOWN &  
COUNTRY  
SURFACES



## PANEL

Design  
Roberto Cicchinè

**ITA TNC.** è un progetto.

Un progetto aperto e in continuo sviluppo che ricerca l'essenza, il minimo comun denominatore. Cerchiamo l'ergonomia, la sintesi, quella piccola cosa che può cambiare davvero la nostra vita in meglio. Hai presente? Un materiale più leggero e resistente, un rivestimento modellabile, non mettendo mai da parte la bellezza, la comodità e l'uso che ne farai. Collaboriamo con i migliori designer al mondo per portare avanti questo progetto perché ci piace sognare un futuro prossimo dove tutto quello che abbiamo intorno sia così.

## ENG

**TNC.** is an open project, a work in progress.

We search the essence, the lowest common denominator.

We search ergonomics, synthesis, that little thing can really change our lives for a better living. Do you know what we mean? A more lightweight and resistant material, a moldable coat for example.

Beauty, comfort and the use you're going to make of our products is our primary target. We work with the best designers in the world to carry out this project.

We dream a future where all you have around is better than ever.

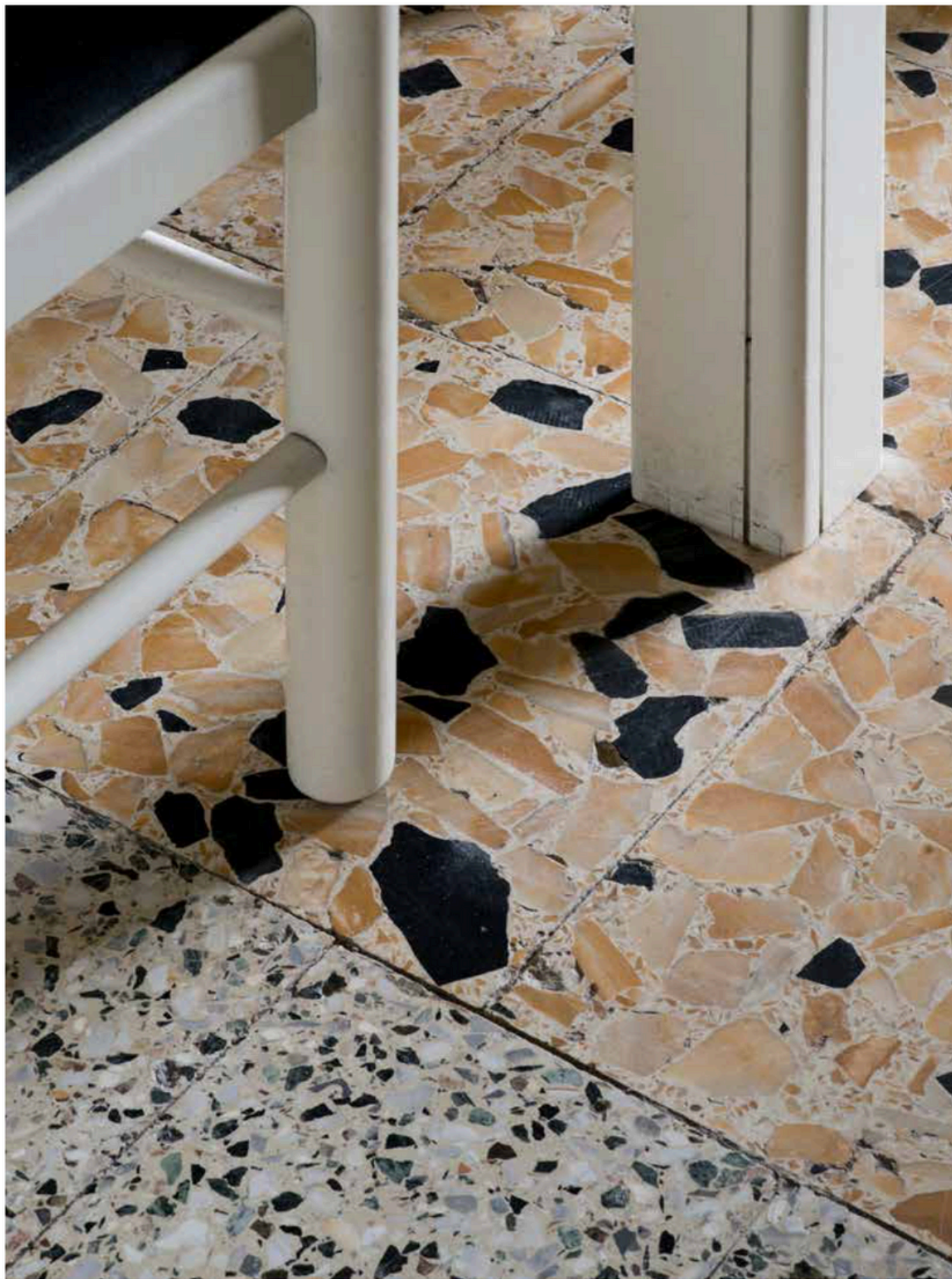
# Catalogue 2021

06\_TNClab Panel

Design  
Roberto Cicchinè

24\_TNCboiserie Panel

Design  
Roberto Cicchinè



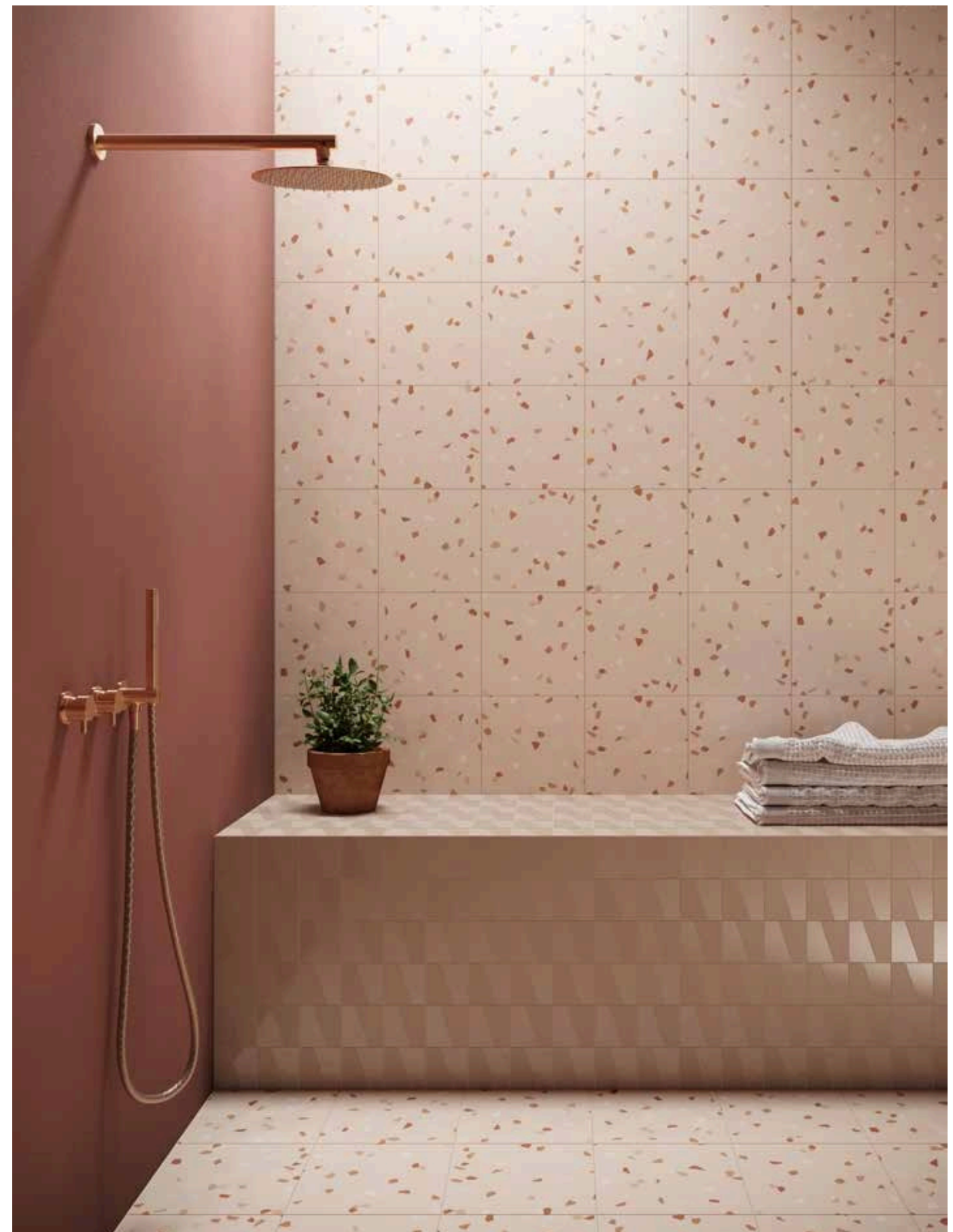
## Panel

Design  
Roberto Cicchinè

ITA Panel è un progetto che nasce dal desiderio di confrontarsi con il mondo delle “graniglie”. Il grande rispetto che la filosofia TNC. ha verso le materie naturali ha portato a realizzare un prodotto che si distanzia volutamente dalla simulazione dell’originale. L’utilizzo di un filtro digitale dona alla superficie un sapore fortemente contemporaneo mantenendo vivo il ricordo del prodotto autentico. Le quattro tipologie di superfici realizzate con diverse granulometrie su 4 toni cromatici abbinabili ai 13 colori del progetto TNC. permettono un utilizzo versatile del prodotto, dal rimando elegante e più classico del monotinta sino alla giocosità della proposta mix.

### ENG

Panel is a project born from the desire to deal with the world of “grits”. The great respect that TNC. philosophy has towards natural materials has led to the realization of a product that deliberately distances itself from the imitation of the original. The use of a digital filter gives the surface a highly contemporary flavor while keeping alive the memory of the authentic product. The four types of surfaces are realized with different granulometries on 4 chromatic tones which can be combined with the 13 colors of the TNC. project, allowing a versatile use of the product, from the elegant and more classic evenness of the plain color up to the playfulness of the mix proposal.







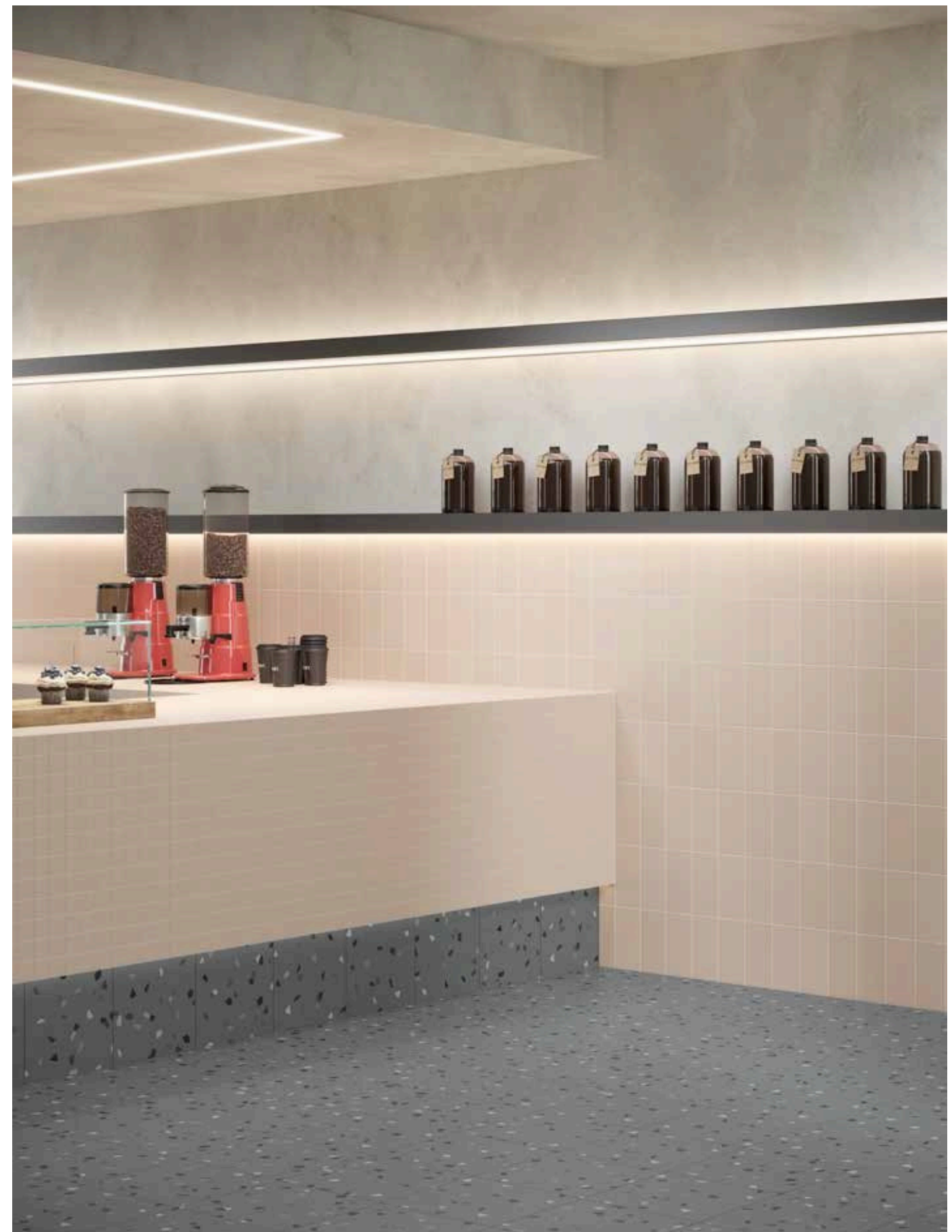
Panel Grey Mix Colors.  
Dust/Grey/Mud/Coffee/Black

TNCtiles  
Blends x4  
Grey 10x10

012



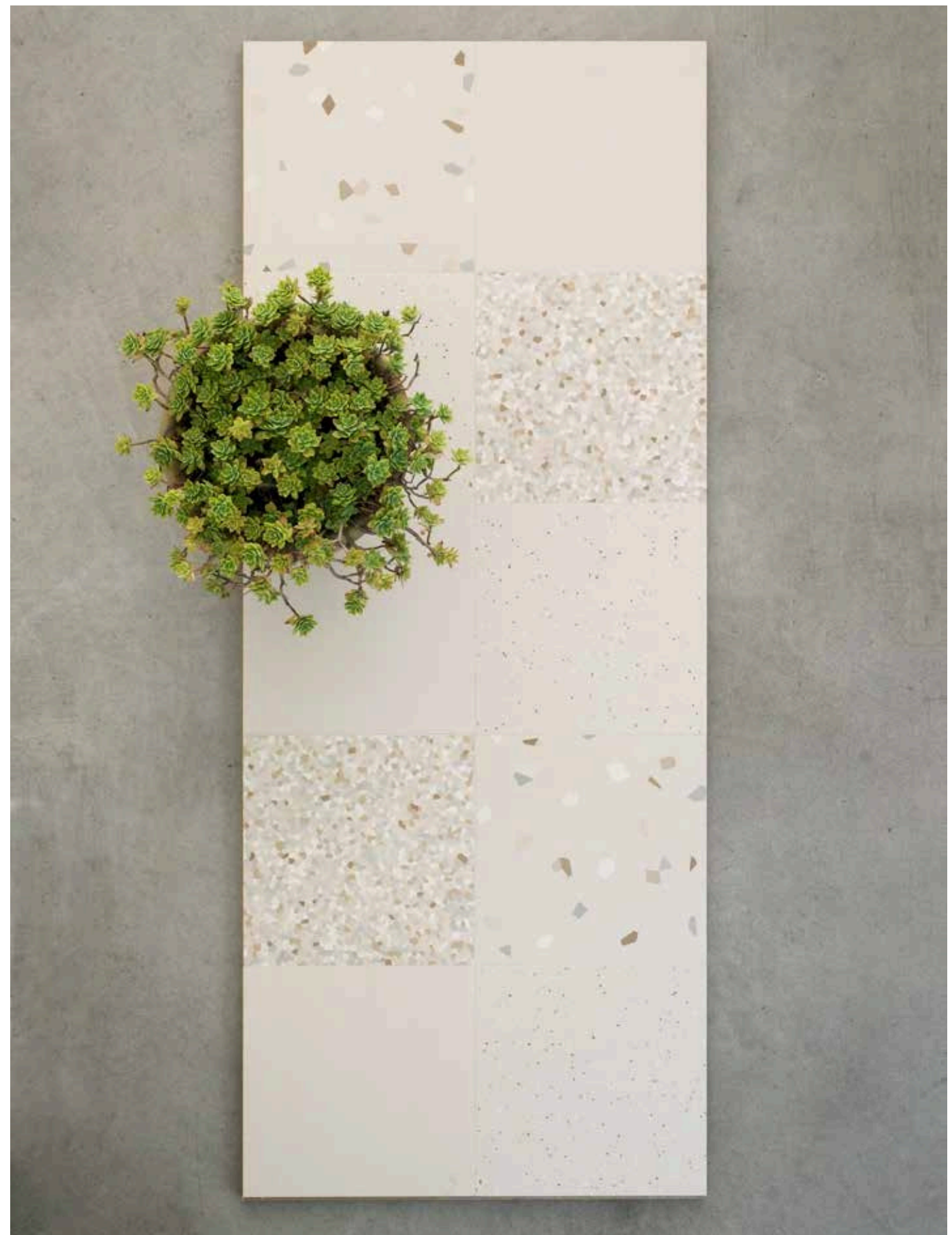
013







016



TNC.

Panel  
White Mix  
Colors. White/Sand/Dust/Azure/Mou

017

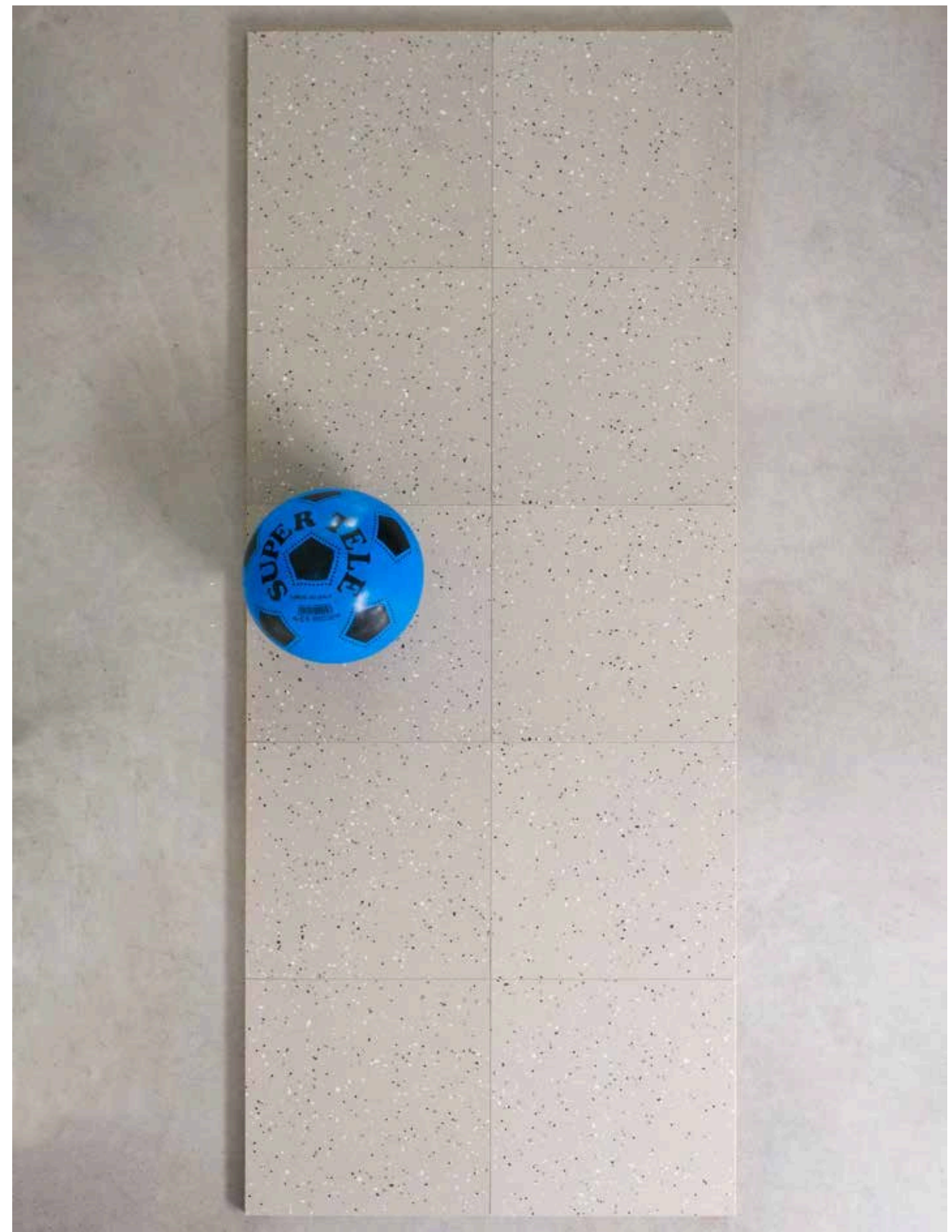


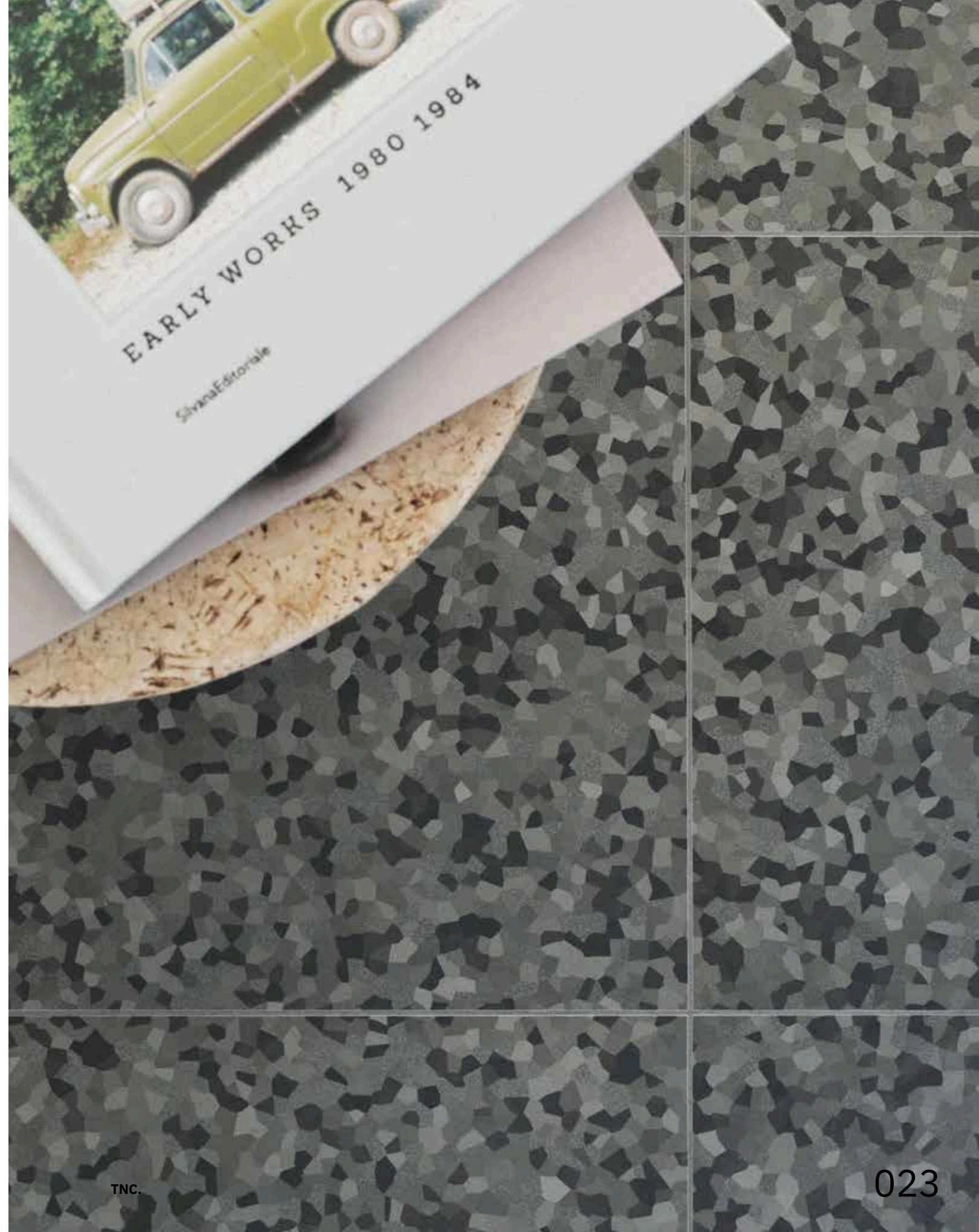
Panel  
Terracotta Large  
Colors. White/Terracotta/Cotto/Klinker

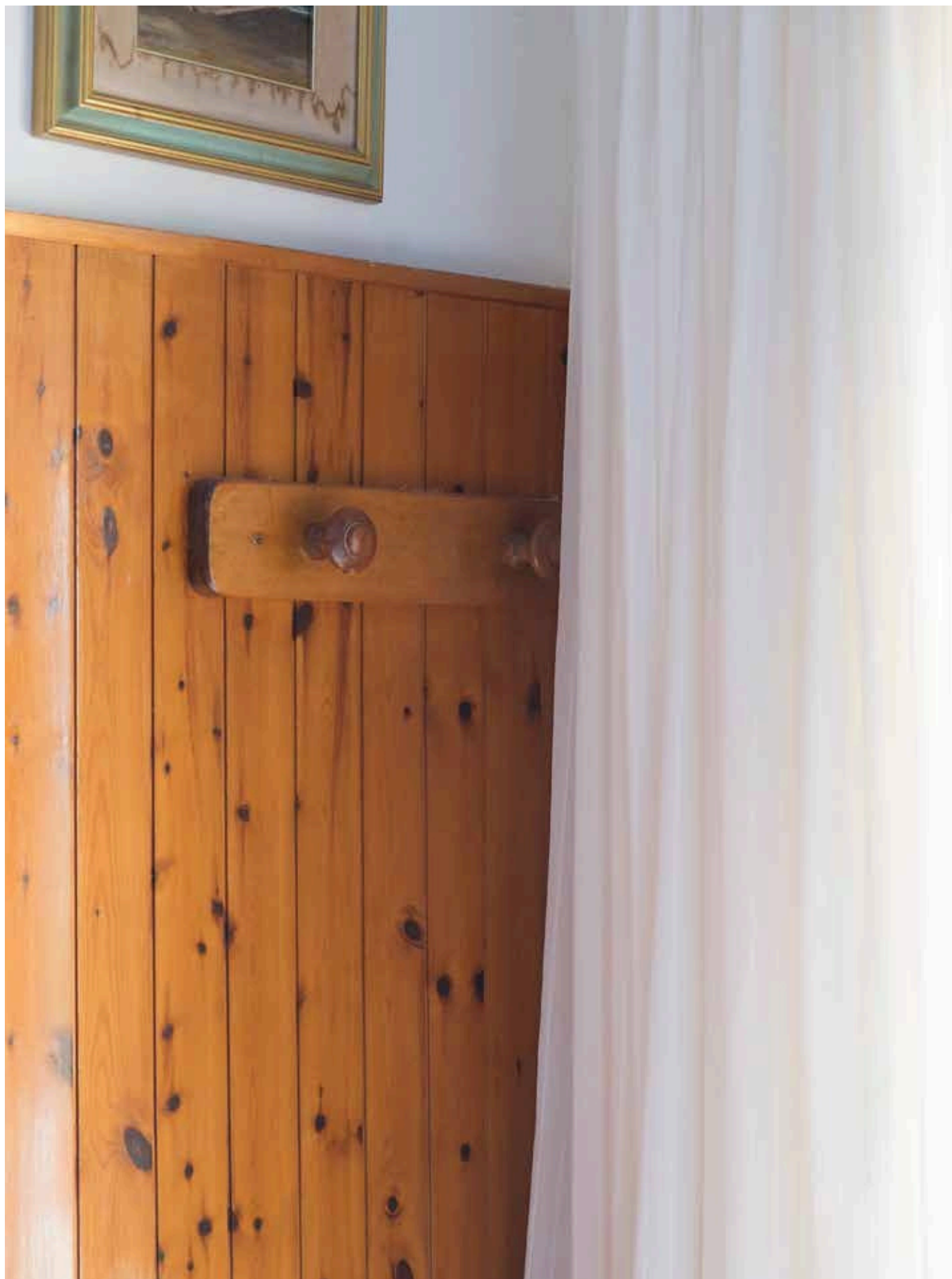
TNCpaints  
Klinker

018









## Panel

Design  
Roberto Cicchinè

ITA Panel è un progetto che si ispira alle superfici in legno tipiche in edilizia, particolarmente utilizzate negli anni '70 come rivestimenti decorativi. Doghe ceramiche create per trafila e realizzate con maschiature sui lati lunghi permettono l'incastro degli elementi per creare una superficie monolitica senza l'utilizzo dello stucco tra una doga e l'altra.

Prendendo in prestito dall'originale il sapore démodé, questo Panel ceramico, con l'aiuto di elementi angolari e di chiusura, decora pareti con zoccolature o campiture piene nei vari ambienti della casa. L'utilizzo nei 13 toni cromatici rafforza la capacità del progetto di adattarsi a molteplici atmosfere da creare e condividere con le altre collezioni del progetto TNC.

### ENG

Panel is a project inspired by the typical wooden surfaces characteristic in construction, particularly used in the '70s as decorative coverings. Ceramic slats, created through a die and made with tapping on the long sides, allow the joints of the elements to create a monolithic surface without the use of grout between one slat and the other.

Borrowing the old-fashioned flavor from the original inspiration, this ceramic Panel (matchboarding), with the help of angular elements and closure, decorates walls with plinths or full coverings in the various spaces of the house. The use of the 13 chromatic tones reinforces the ability of the project to adapt to multiple atmospheres to be created and shared with the other collections of the TNC project.











Panel Graphite Mix Colors.  
Dust/Mud/Graphite/Coffee/Black

Panel  
Black





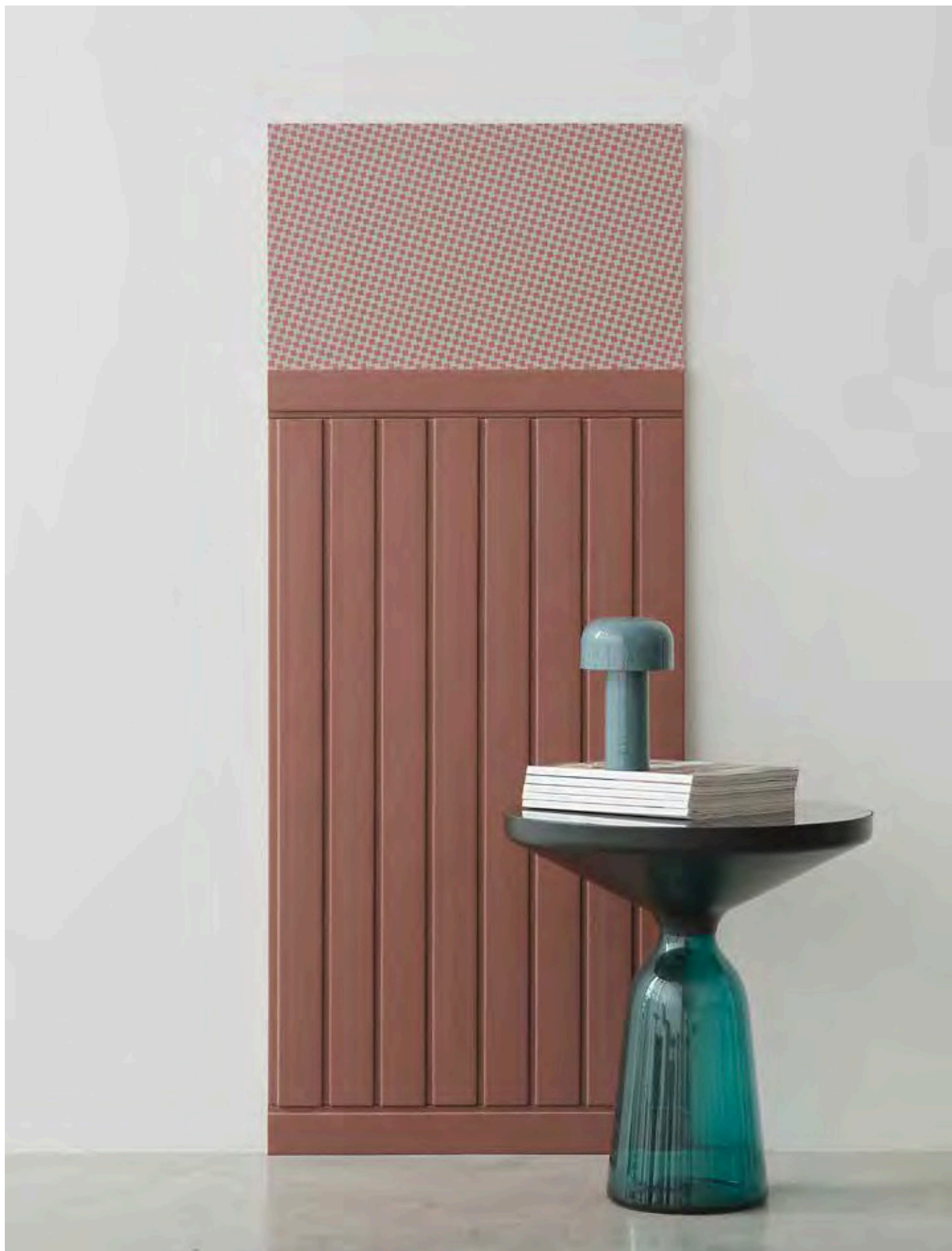
036

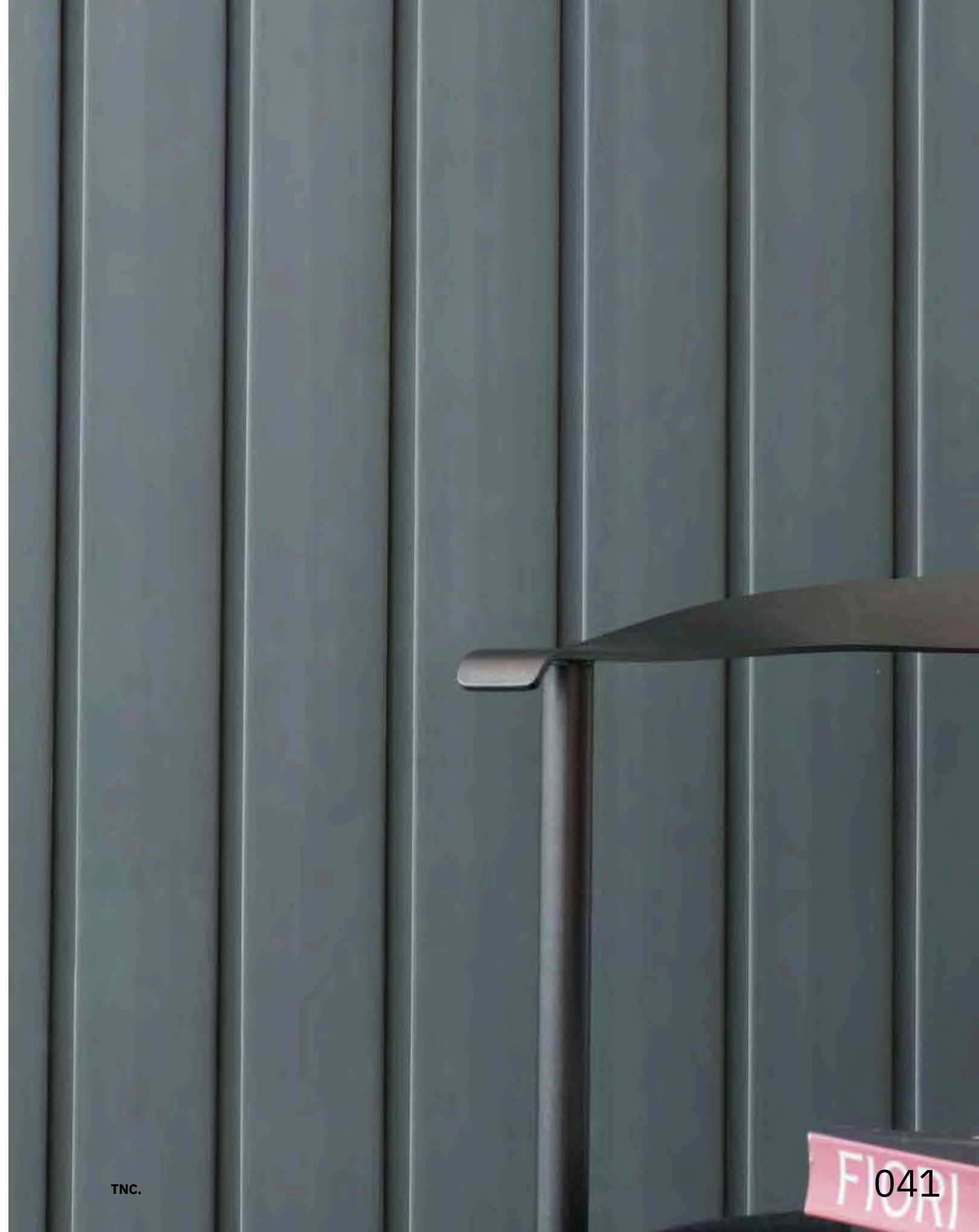


TNC.

Panel  
Azure

037





Scheda tecnica  
Technical features

Panel

Design  
Roberto Cicchinè

# Panel White

Design  
Roberto Cicchinè



MIFAX01  
Panel White Mix Colors.  
White/Sand/Dust/Azure/Mou

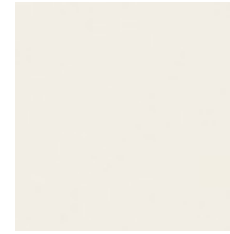
STUCCO  
CONSIGLIATO  
SUGGESTED  
GROUT

210

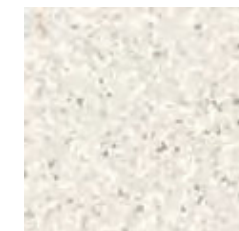
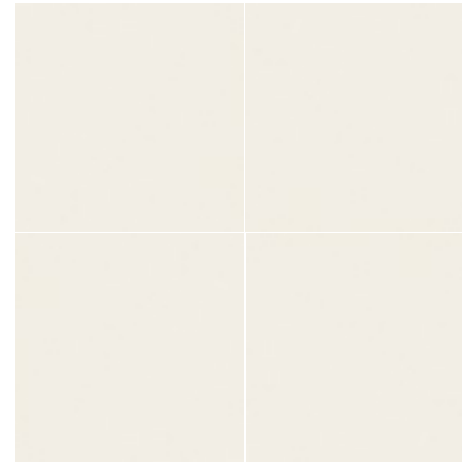
# Panel

30x30 cm/12x12 inches  
rettificato/rectified

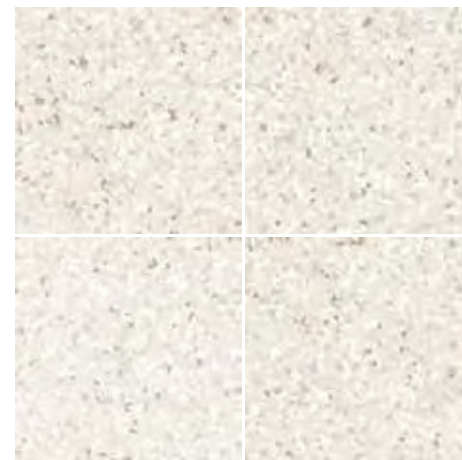
Design  
Roberto Cicchinè



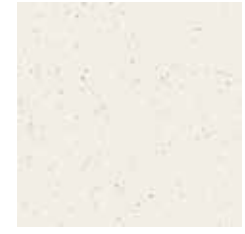
MIFA01  
Panel White



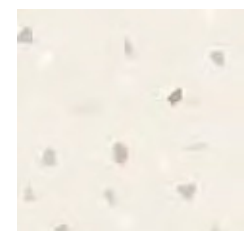
MIFAM01  
Panel White Medium



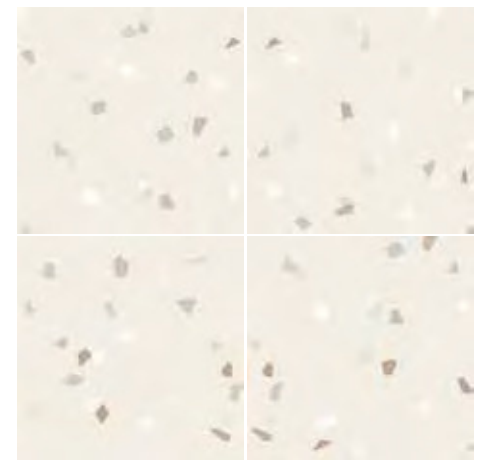
TNC.



MIFAS01  
Panel White Small

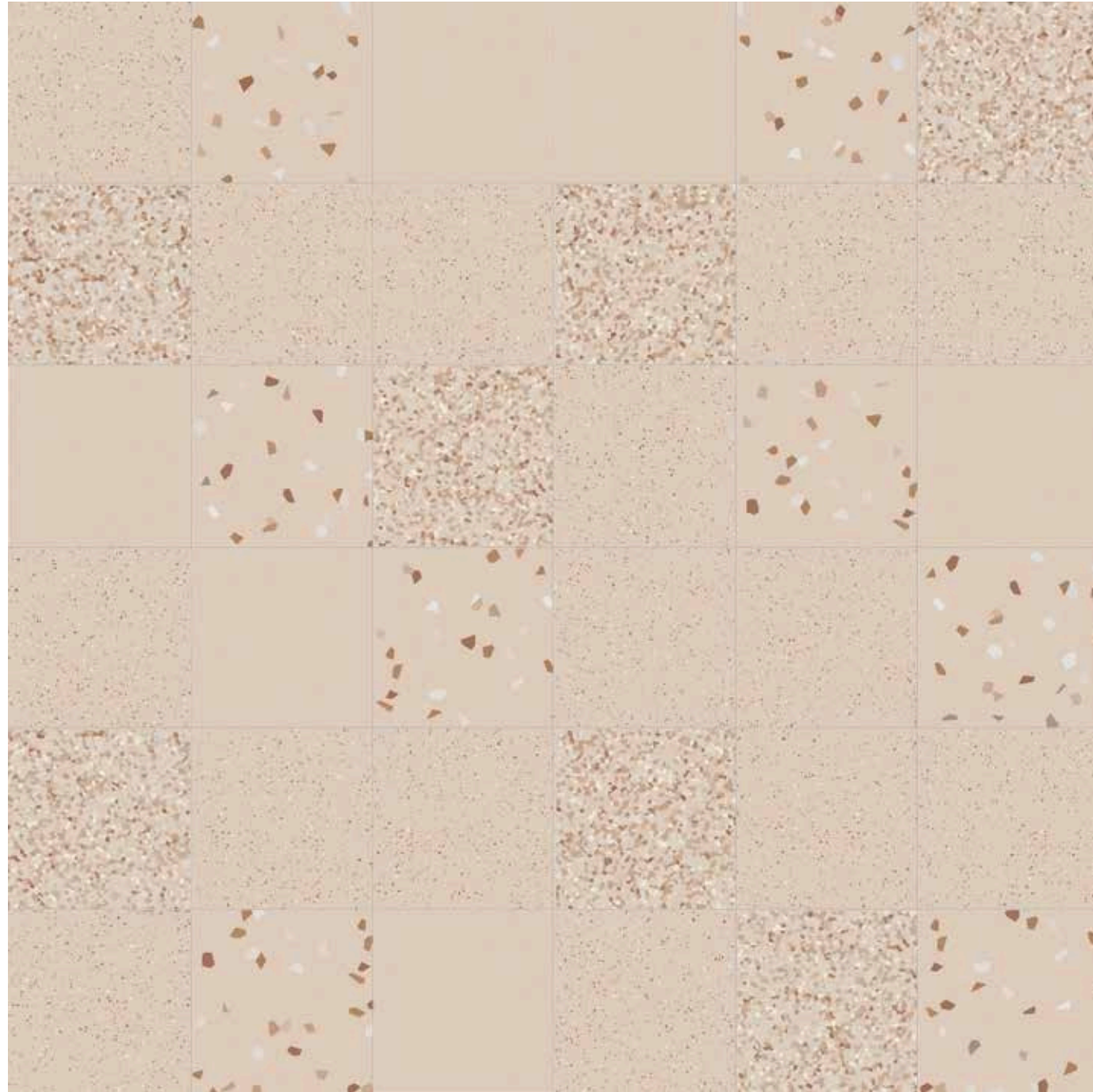


MIFAL01  
Panel White Large



# Panel Terracotta

Design  
Roberto Cicchinè



MIFAX11  
Panel Terracotta Mix Colors.  
White/Terracotta/Cotto/Klinker

STUCCO  
CONSIGLIATO  
SUGGESTED  
GROUT

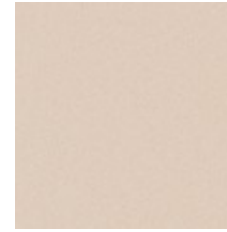
110

046

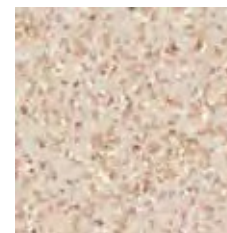
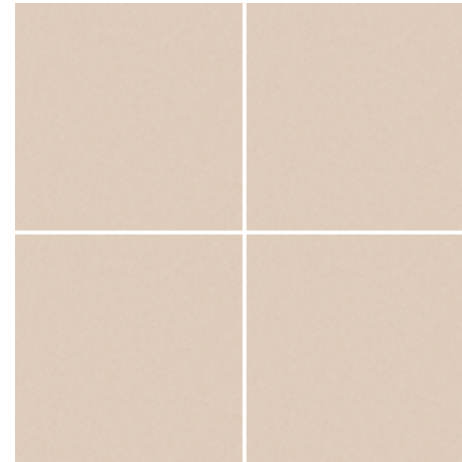
# Panel

30x30 cm/12x12 inches  
rettificato/rectified

Design  
Roberto Cicchinè



MIFA11  
Panel Terracotta



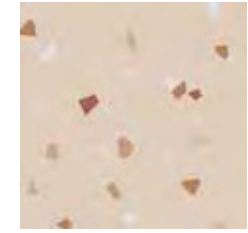
MIFAM11  
Panel Terracotta Medium



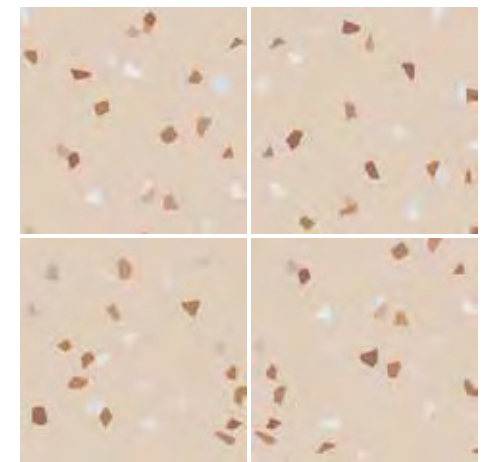
TNC.



MIFAS11  
Panel Terracotta Small



MIFAL11  
Panel Terracotta Large

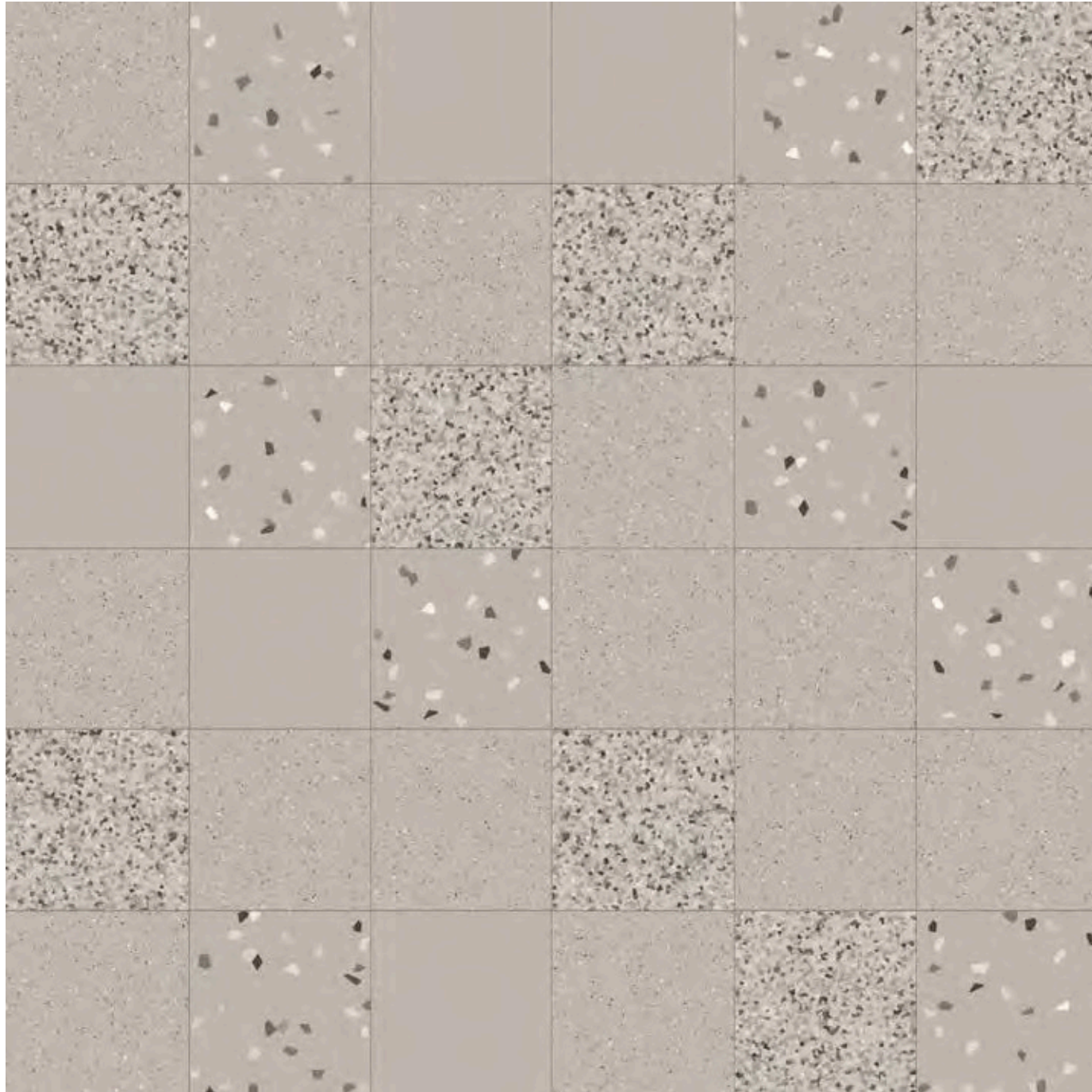


047



# Panel Grey

Design  
Roberto Cicchinè



MIFAX04  
Panel Grey Mix Colors.  
Dust/Grey/Mud/Coffee/Black

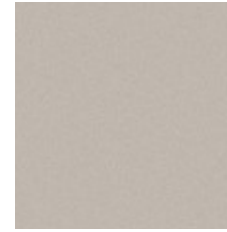
STUCCO  
CONSIGLIATO  
SUGGESTED  
GROUT

215

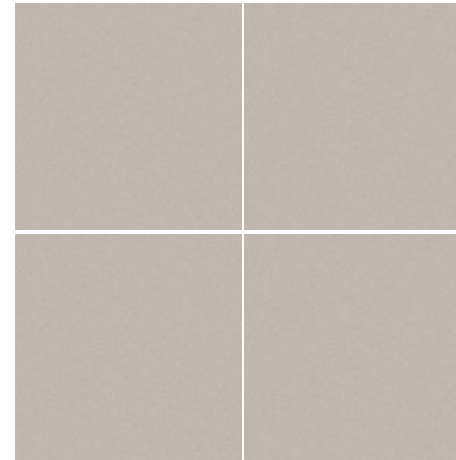
# Panel

30x30 cm/12x12 inches  
rettificato/rectified

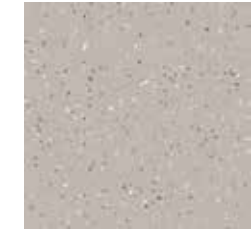
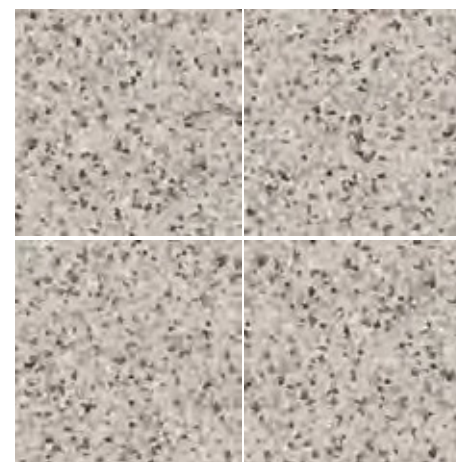
Design  
Roberto Cicchinè



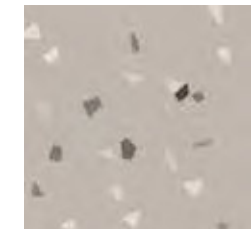
MIFA04  
Panel Grey



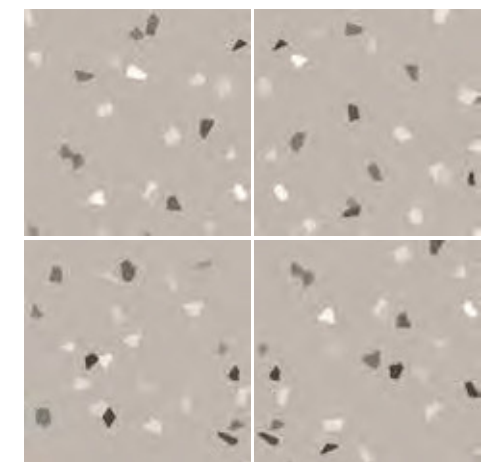
MIFAM04  
Panel Grey Medium



MIFAS04  
Panel Grey Small

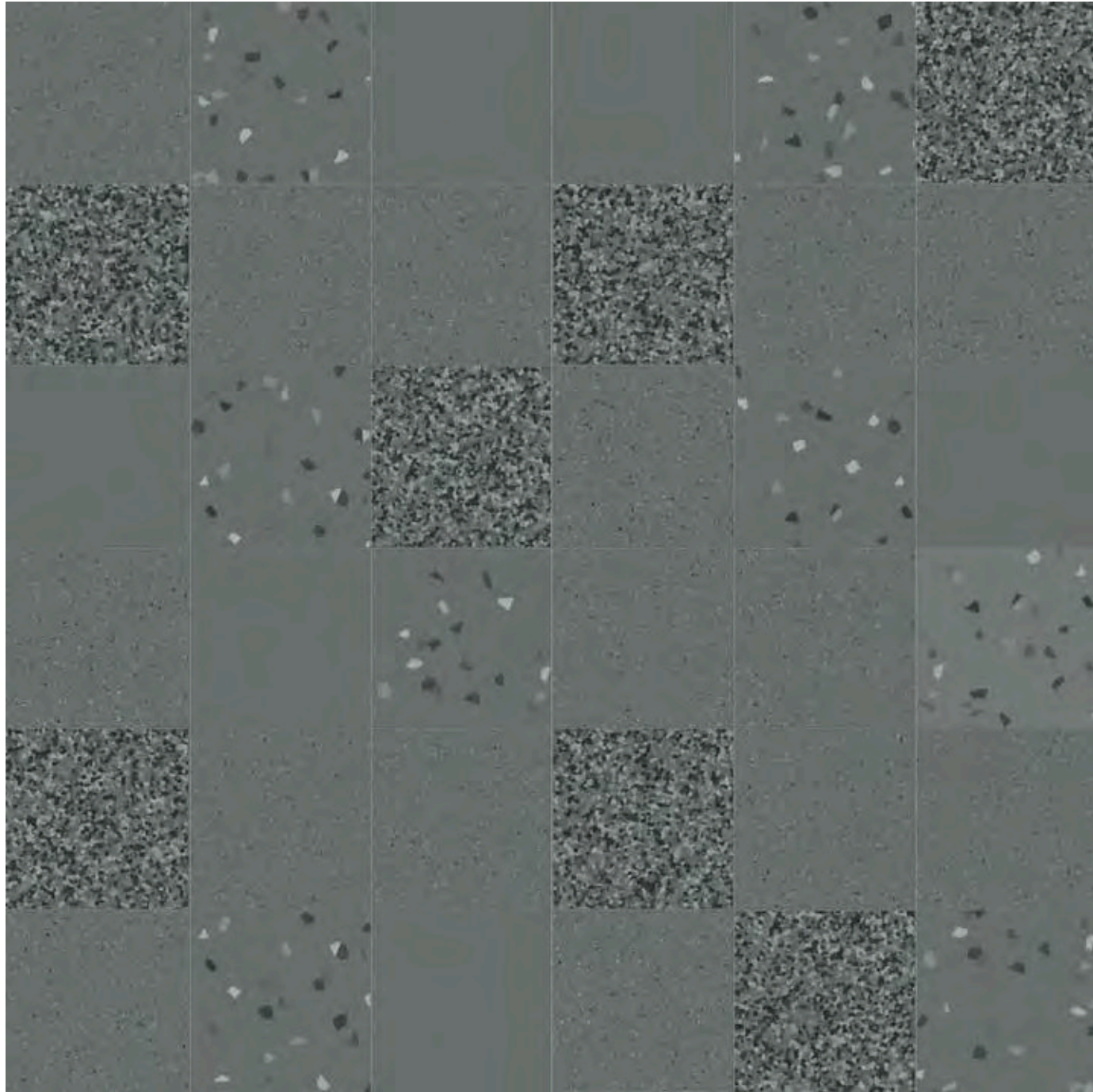


MIFAL04  
Panel Grey Large



# Panel Graphite

Design  
Roberto Cicchinè



MIFAX09  
Panel Graphite Mix Colors.  
Dust/Mud/Graphite/Coffee/Black

STUCCO  
CONSIGLIATO  
SUGGESTED  
GROUT

125

050

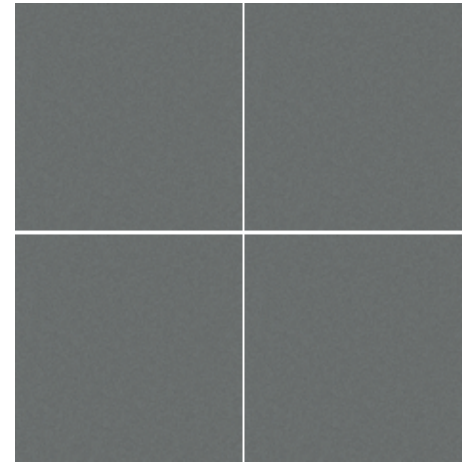
# Panel

30x30 cm/12x12 inches  
rettificato/rectified

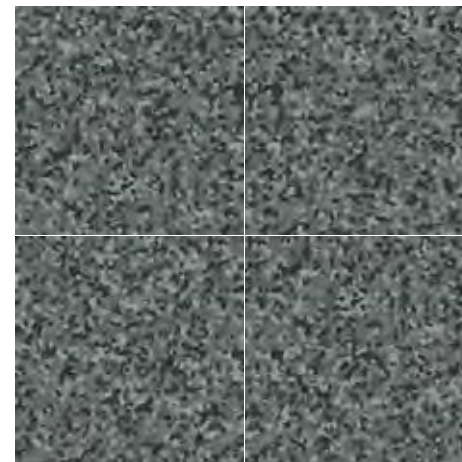
Design  
Roberto Cicchinè



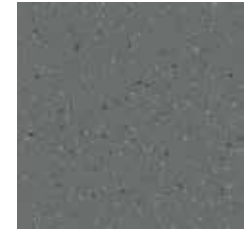
MIFA09  
Panel Graphite



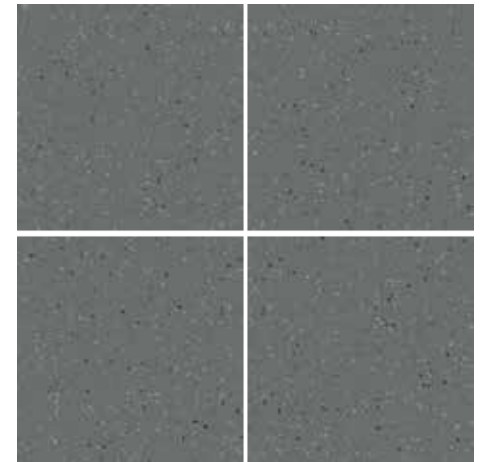
MIFAM09  
Panel Graphite Medium



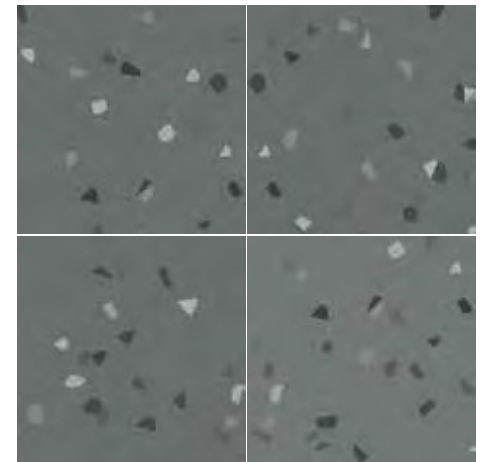
TNC.







MIFAS09  
Panel Graphite Small






MIFAL09  
Panel Graphite Large

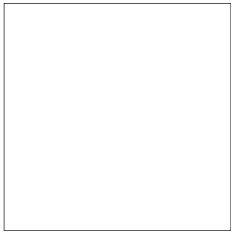


051

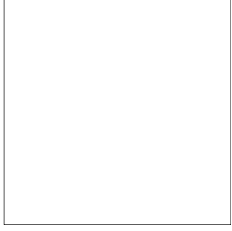
|  |  |
|--|--|
|    | <b>GRES PORCELLANATO<br/>PORCELAIN STONEWARE</b>   |
| <b>ISO 10545/2 - DIMENSIONI<br/>ISO 10545/2 - SIZES</b>                            |  |
| Lunghezza e larghezza<br>Length and width  | ± 0,6%   |
| Spessore<br>Thickness  | ± 0,6%   |
| Rettilinearità degli spigoli<br>Straightness of edges                              | ± 0,5%   |
| Ortogonalità<br>Wedging  | ± 0,5%   |
| Planarità<br>Flatness  | ± 0,5%   |
|    | <b>ISO 10545/3 - ASSORBIMENTO DELL'ACQUA<br/>ISO 10545/3 - WATER ABSORPTION</b><br>< 0,5%<br>Un basso assorbimento d'acqua garantisce l'utilizzo dei nostri materiali anche per uso esterno.<br>Low water absorption allows our materials to be used also outdoor. |
|  | <b>ISO 10545/9 - RESISTENZA AGLI SBALZI TERMICI<br/>ISO 10545/9 - RESISTANCE TO THERMAL SHOCK</b><br>Resistente - Nessuna alterazione visibile<br>Resistant - No visible alteration  |
|  | <b>RESISTENZA ALLO SCIVOLAMENTO<br/>SKID RESISTANCE</b><br>DIN 51130 R10<br>ANSI A137-1 DCOF > 0,42  |

|  |   |
|--|---|
|   | <b>ISO 10545/12 - RESISTENZA AL GELO<br/>ISO 10545/12 - FROST RESISTANCE</b><br><br>GARANTITA - Permette di utilizzare questo materiale per esterno, per interno, in qualsiasi condizione climatica.<br><br>GUARANTEED - This material can be used indoors or outdoors in any weather conditions. |
|   | <b>ISO 10545/13 - RESISTENZA ALL'ATTACCO CHIMICO<br/>ISO 10545/13 - RESISTANCE TO ACIDS AND ALKALIS</b><br><br>Da ULA a ULB   From ULA to ULB<br>Da UHA a UHB   From UHA to UHB<br>UA   |
|   | <b>ISO 10545/14 - RESISTENZA ALLE MACCHIE<br/>ISO 10545/14 - STAINS RESISTANCE</b><br><i>classe 3 min   minimum 3</i>   |
|  | <b>RESISTENZA DEI COLORI ALLA LUCE<br/>LIGHT FASTNESS</b><br><br>NESSUNA VARIAZIONE - Mantenimento del colore in concomitanza di una prolungata esposizione alla luce.<br><br>NO CHANGE OF COLOURS - Maintenance of colour shade with prolonged exposure to light.                                |

Panel

|   |                            |                        |              |
|---|----------------------------|------------------------|--------------|
|  | <b>FORMATO / SIZE</b>      | 30x30 cm               |              |
|   | <b>SPESORE / THICKNESS</b> | 10 mm                  |              |
| <b>SCATOLA BOX</b>  |                            | <b>PALLET PALLET</b>   |              |
| <b>PZ / PCS</b>   | <b>9</b>                   | <b>SCATOLE / BOXES</b> | <b>64</b>    |
| <b>MQ / SQM</b>   | <b>0,81</b>                | <b>KG / KG</b>         | <b>51,84</b> |
| <b>KG / KG</b>  | <b>17</b>                  |                        | <b>1108</b>  |

Panel Mix: MIFAX01 | MIFAX04 | MIFAX09 | MIFAX11

|   |                            |                        |              |
|---|----------------------------|------------------------|--------------|
|  | <b>FORMATO / SIZE</b>      | 30x30 cm               |              |
|   | <b>SPESORE / THICKNESS</b> | 10 mm                  |              |
| <b>SCATOLA BOX</b>  |                            | <b>PALLET PALLET</b>   |              |
| <b>PZ / PCS</b>   | <b>11</b>                  | <b>SCATOLE / BOXES</b> | <b>48</b>    |
| <b>MQ / SQM</b>   | <b>1</b>                   | <b>KG / KG</b>         | <b>48,00</b> |
| <b>KG / KG</b>  | <b>21</b>                  |                        | <b>1028</b>  |

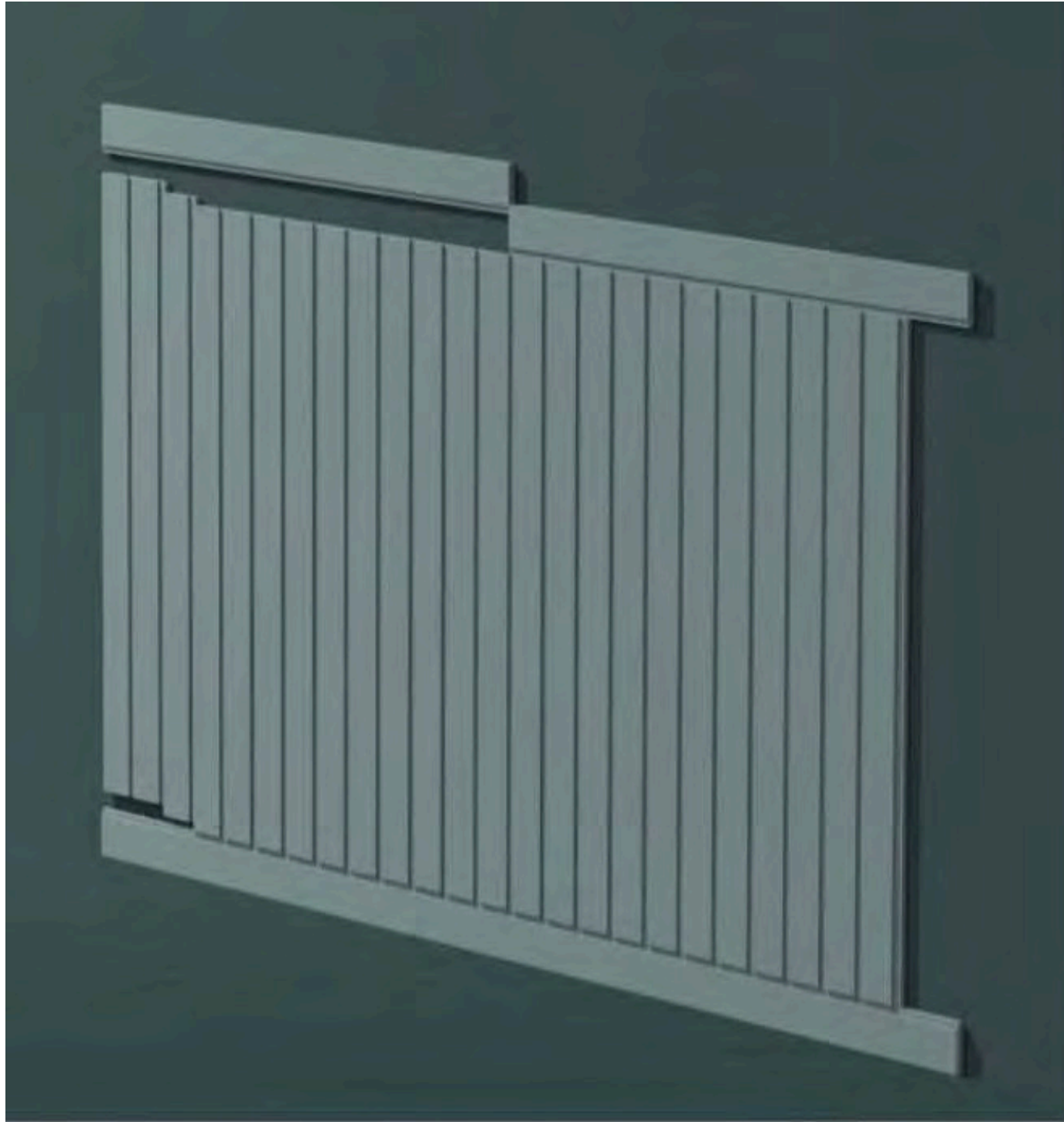
Scheda tecnica  
Technical features

Panel

Design  
Roberto Cicchinè

# Panel

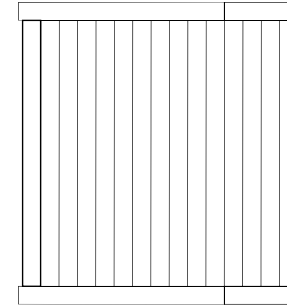
Design  
Roberto Cicchinè



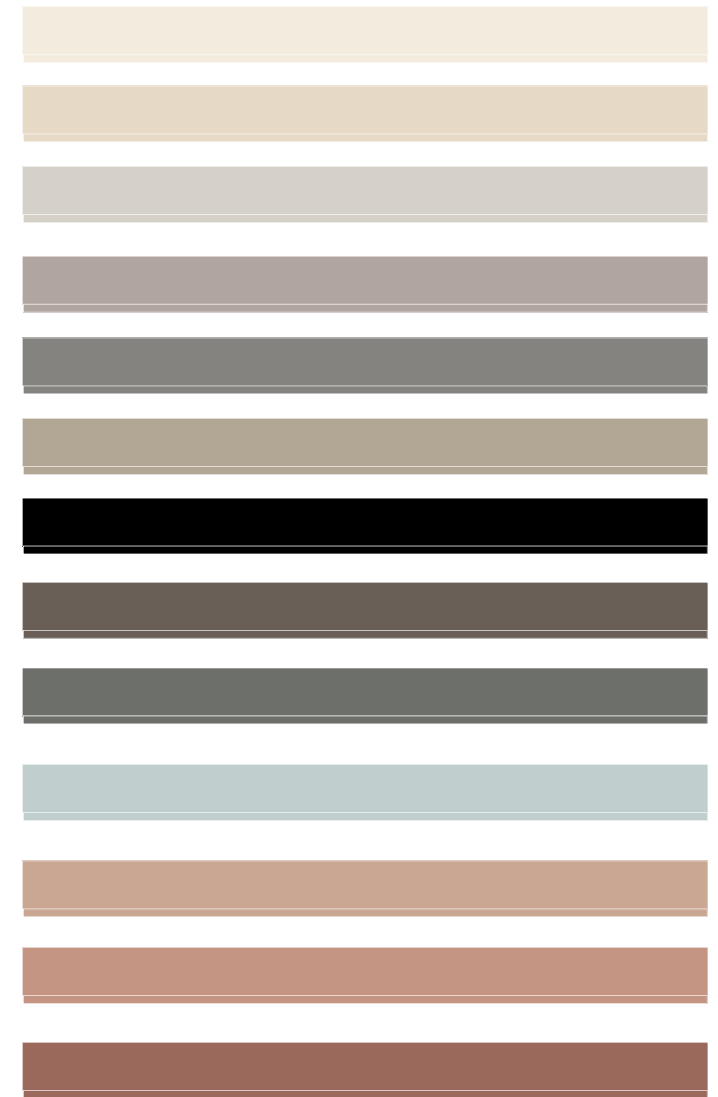
# Panel

7,5x100 cm / 3x40 inches

Design  
Roberto Cicchinè

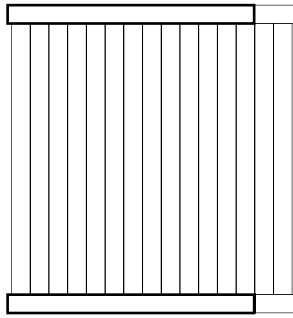


- MIPE01 Panel White
- MIPE02 Panel Sand
- MIPE03 Panel Dust
- MIPE04 Panel Grey
- MIPE05 Panel Mud
- MIPE06 Panel Mou
- MIPE07 Panel Black
- MIPE08 Panel Coffee
- MIPE09 Panel Graphite
- MIPE10 Panel Azure
- MIPE11 Panel Terracotta
- MIPE12 Panel Cotto
- MIPE13 Panel Klinker



# Panel Small Board

7x100 cm / 3x40 inches



Design  
Roberto Cicchinè

MIPES01 Panel Small Board White

MIPES02 Panel Small Board Sand

MIPES03 Panel Small Board Dust

MIPES04 Panel Small Board Grey

MIPES05 Panel Small Board Mud

MIPES06 Panel Small Board Mou

MIPES07 Panel Small Board Black

MIPES08 Panel Small Board Coffee

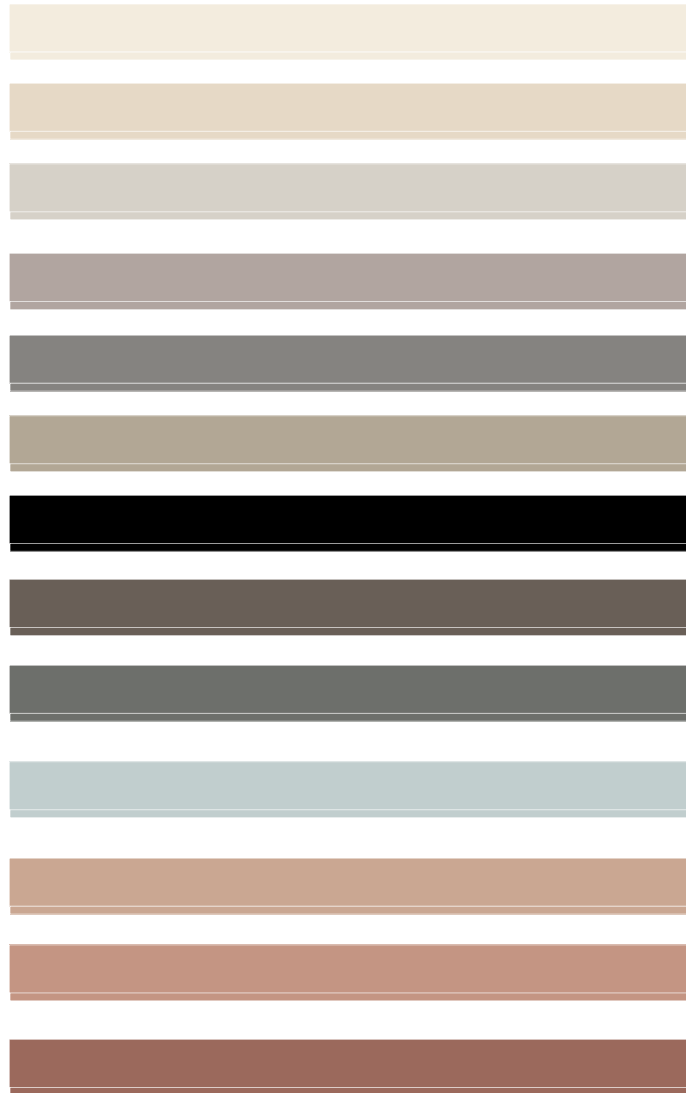
MIPES09 Panel Small Board Graphite

MIPES10 Panel Small Board Azure

MIPES11 Panel Small Board Terracotta

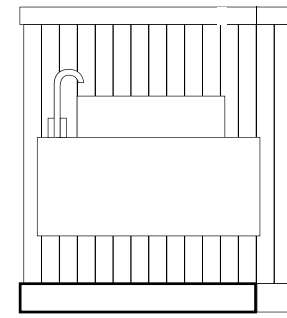
MIPES12 Panel Small Board Cotto

MIPES13 Panel Small Board Klinker



# Panel Large Board

17x100 cm / 7x40 inches



Design  
Roberto Cicchinè

MIPEL01 Panel Large Board White

MIPEL02 Panel Large Board Sand

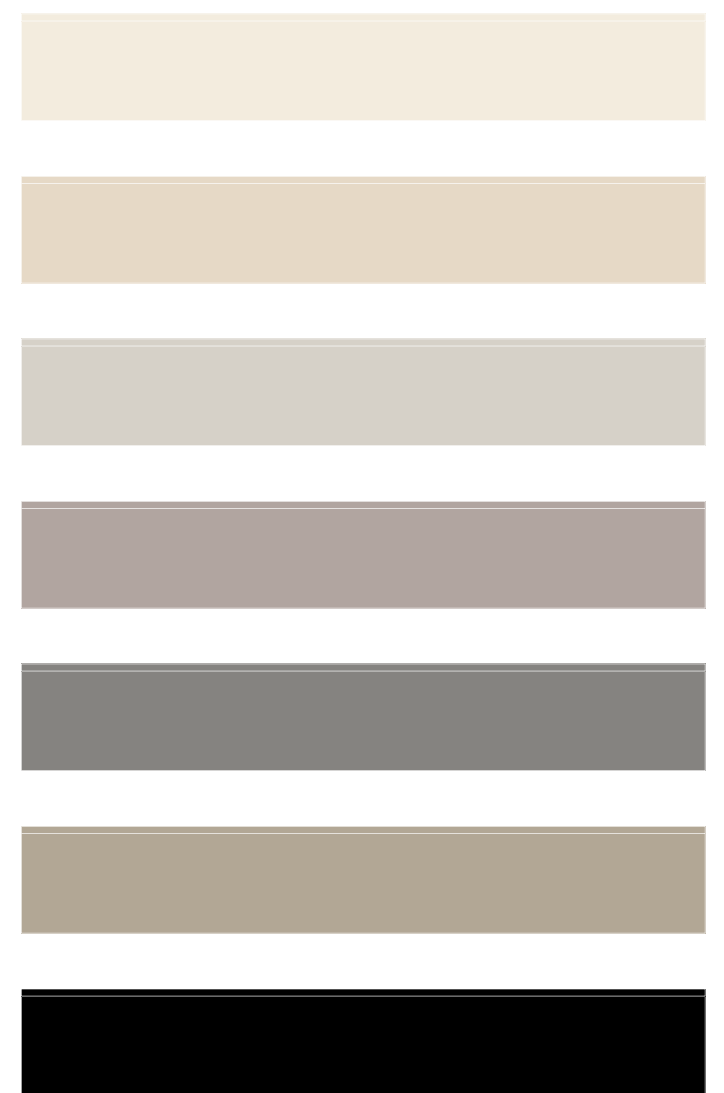
MIPEL03 Panel Large Board Dust

MIPEL04 Panel Large Board Grey

MIPEL05 Panel Large Board Mud

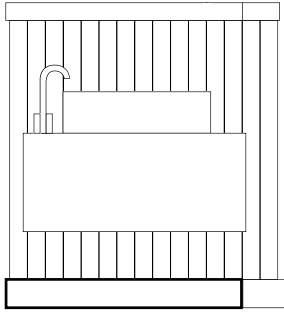
MIPEL06 Panel Large Board Mou

MIPEL07 Panel Large Board Black

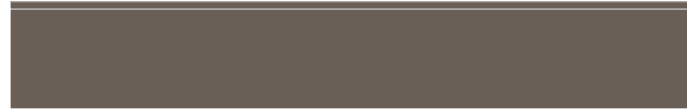


# Panel Large Board

17x100 cm / 7x40 inches



MIPEL08 Panel Large Board Coffee



MIPEL09 Panel Large Board Graphite



MIPEL10 Panel Large Board Azure



MIPEL11 Panel Large Board Terracotta



MIPEL12 Panel Large Board Cotto



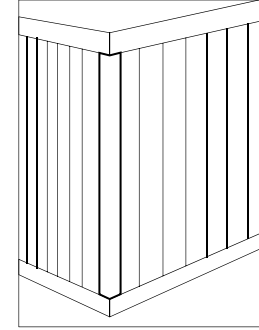
MIPEL13 Panel Large Board Klinker



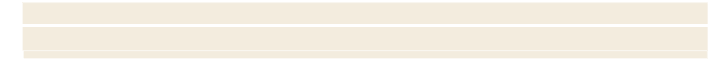
Design  
Roberto Cicchinè

# Panel Corner

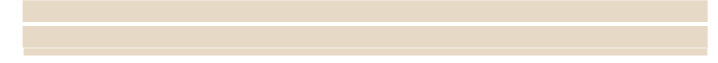
100 cm / 40 inches



MIPEC01 Panel Corner White



MIPEC02 Panel Corner Sand



MIPEC03 Panel Corner Dust



MIPEC04 Panel Corner Grey



MIPEC05 Panel Corner Mud



MIPEC06 Panel Corner Mou



MIPEC07 Panel Corner Black



MIPEC08 Panel Corner Coffee



MIPEC09 Panel Corner Graphite



MIPEC10 Panel Corner Azure



MIPEC11 Panel Corner Terracotta



MIPEC12 Panel Corner Cotto



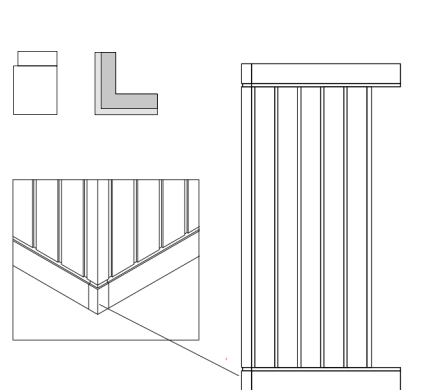
MIPEC13 Panel Corner Klinker



Design  
Roberto Cicchinè

# Panel Small Corner

7 cm / 3 inches



MIPESC01 Panel Small Corner White

MIPESC02 Panel Small Corner Sand

MIPESC03 Panel Small Corner Dust

MIPESC04 Panel Small Corner Grey

MIPESC05 Panel Small Corner Mud

MIPESC06 Panel Small Corner Mou

MIPESC07 Panel Small Corner Black

MIPESC08 Panel Small Corner Coffee

MIPESC09 Panel Small Corner Graphite

MIPESC10 Panel Small Corner Azure

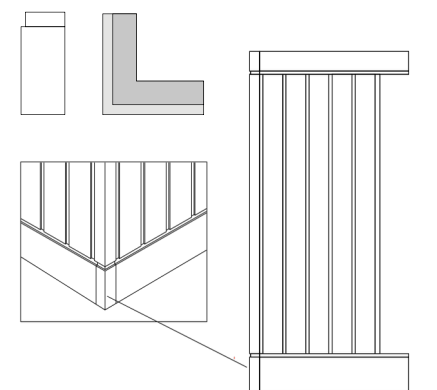
MIPESC11 Panel Small Corner Terracotta

MIPESC12 Panel Small Corner Cotto

MIPESC13 Panel Small Corner Klinker

# Panel Large Corner

17 cm / 7 inches



MIPELC01 Panel Large Corner White

MIPELC02 Panel Large Corner Sand

MIPELC03 Panel Large Corner Dust

MIPELC04 Panel Large Corner Grey

MIPELC05 Panel Large Corner Mud

MIPELC06 Panel Large Corner Mou

MIPELC07 Panel Large Corner Black

MIPELC08 Panel Large Corner Coffee

MIPELC09 Panel Large Corner Graphite

MIPELC10 Panel Large Corner Azure

MIPELC11 Panel Large Corner Terracotta

MIPELC12 Panel Large Corner Cotto

MIPELC13 Panel Large Corner Klinker

Design  
Roberto Cicchinè

# Panel


Scheda Tecnica  
Technical Features


**B** BICOTTURA IN PASTA BIANCA  
WHITE BODY DOUBLE FIRING


---

ISO 10545/2 - DIMENSIONI  
ISO 10545/2 - SIZES


Conforme / Compliant

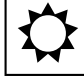
 ISO 10545/3 - ASSORBIMENTO DELL'ACQUA  
ISO 10545/3 - WATER ABSORPTION  
> 10%

 ISO 10545/9 - RESISTENZA AGLI SBALZI TERMICI  
ISO 10545/9 - RESISTANCE TO THERMAL SHOCK  
Resistente - Nessuna alterazione visibile  
Resistant - No visible alteration

 ISO 10545/13 - RESISTENZA ALL'ATTACCO CHIMICO  
ISO 10545/13 - RESISTANCE TO ACIDS AND ALKALIS

Da ULA a ULB | From ULA to ULB  
Da UHA a UHB | From UHA to UHB  
UA

 ISO 10545/14 - RESISTENZA ALLE MACCHIE  
ISO 10545/14 - STAINS RESISTANCE  
classe 3 min | minimum class 3

 RESISTENZA DEI COLORI ALLA LUCE  
LIGHT FASTNESS

NESSUNA VARIAZIONE - Mantenimento del colore in  
concomitanza di una prolungata esposizione alla luce.

NO CHANGE OF COLOURS - Maintenance of colour  
shade with prolonged exposure to light.

I pezzi ceramici contenuti in queste scatole sono il risultato di un prodotto artigianale fabbricato a mano e si caratterizzano per l'esclusività e le piccole variazioni di continuità, tramatura e calibro tra i vari pezzi. Eventuali leggeri difetti superficiali sono da considerarsi parte integrante dell'artigianalità del prodotto. I toni presenti all'interno delle campionature sono da ritenersi indicativi e possono variare leggermente tra una produzione e l'altra. Non si accetteranno reclami una volta posato il prodotto.

The exclusive ceramic products contained in these boxes are hand made and characterized by a slight variation in texture and caliber among different pieces. Any slight surface defects are possible and considered an inherent characteristic of this hand made product. The shades of samples are indicative as they may vary slightly across production lots. No claims will be accepted once the product has been fixed.



# Panel

Imballi / Packaging

Imballi  
Packaging

## 7,5x100 Listel



|                      |            |
|----------------------|------------|
| FORMATO / SIZE       | 7,5x100 cm |
| SPESSORE / THICKNESS | 12 mm      |

|                |       |
|----------------|-------|
| SCATOLA<br>BOX |       |
| PZ / PCS       | 5     |
| MQ / SQM       | 0,375 |
| KG / KG        | 8,5   |

## 7x100 Small Board



|                      |          |
|----------------------|----------|
| FORMATO / SIZE       | 7x100 cm |
| SPESSORE / THICKNESS | 12 mm    |

|                |      |
|----------------|------|
| SCATOLA<br>BOX |      |
| PZ / PCS       | 3    |
| MQ / SQM       | 0,21 |
| KG / KG        | 4,80 |

## 17x100 Large Board



|                      |           |
|----------------------|-----------|
| FORMATI / SIZE       | 17x100 cm |
| SPESSORE / THICKNESS | 12 mm     |

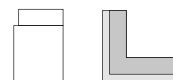
|                |      |
|----------------|------|
| SCATOLA<br>BOX |      |
| PZ / PCS       | 2    |
| MQ / SQM       | 0,34 |
| KG / KG        | 7,40 |

## Panel Corner 100cm



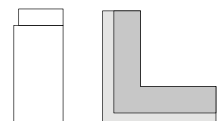
|                |      |
|----------------|------|
| SCATOLA<br>BOX |      |
| PZ / PCS       | 2    |
| KG / KG        | 6,40 |

## Small Corner 7cm



|                |      |
|----------------|------|
| SCATOLA<br>BOX |      |
| PZ / PCS       | 2    |
| KG / KG        | 0,50 |

## Large Corner 17cm



|                |      |
|----------------|------|
| SCATOLA<br>BOX |      |
| PZ / PCS       | 2    |
| KG / KG        | 2,50 |

Il materiale viene venduto solo a scatole intere. Per quantità inferiori al pallet completo sarà addebitato un costo di preparazione paletta di € 10,00.

Material is sold only by full boxes. A pallet preparation cost of € 10,00 will be charged for quantities lower than one complete pallet.

### MORE INFO:



**Town & Country Surfaces**  
230 Fifth Avenue  
Suite 1714  
New York NY 10001

**General Inquiries:**  
info@tncsurfaces.com  
Phone: 212-679-0312

