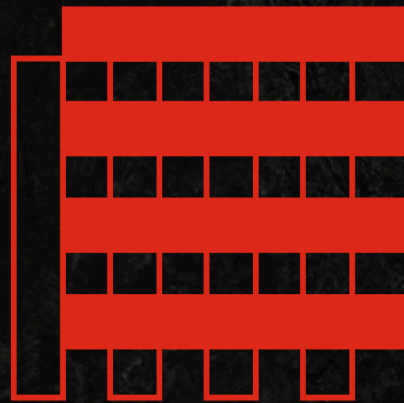




TOWN &
COUNTRY
SURFACES



TECH.INFO
TECHNICALFEATURES
SLABS



SLABS



GENERAL PRECAUTIONS

RECEPTION AND CONTROL OF PRODUCTS

Check the conformity of products before installation (color differences, fragments, etc). Any complaints about the appearance, color, dimensions or visible defects in the product should be made before local application.

The floorings are carefully packed in pallets.

The floorings should remain in its original packaging until the installation or stored in a dry place, in a vertical position. This will prevent fissures and color differences between the humid and dry slabs of the same series. It's advised to leave the pallets always well closed.

Handle the slabs with care to prevent scratches on the products.

Do not slide the parts against each other and never compact with a vibrating plate.

For best results, mix and match pieces from different pallets.

These floorings are manufactured from granules of natural stone, which can present slight variations of tones and color nuances. This cannot, in any case, give rise to a claim.

For the same reason, it must be purchased in the same request the total amount of necessary slabs for the completion of the project/work. To prevent further orders from different lots, it is recommended a purchase of 10% extra.

Be careful not to stain the slabs. Do not let sand or concrete remain on slabs, remove waste immediately with a soft brush.

Do not spill dirty and/or colored sand on the slabs. Protect products already placed while the work is still in progress.

Never work upon applied products.

LEVELS

Whatever the chosen method of application, the soil must always be compacted and with a minimum slope of 1.5 cm/m. The tilt should allow the flow of water, thus ensuring more durability of the product.

EFFLORESCENCE

The appearance of white stains on the surface of the flooring is a natural and technically unavoidable phenomenon called efflorescence, which we can find in certain drying conditions, especially in cement-based floors. These do not alter the intrinsic quality of the pavement and tend to disappear over time after being exposed to natural weathering. The appearance of efflorescence cannot be in any case cause for complaint and shall not give rise to any type of compensation or replacement of the goods and cannot be given as a guarantee by our company.

COLORS

These slabs are manufactured from granules of natural stone, which can present slight variations of tones and color nuances depending on their provision. Visual examination of color should always be done on dry slabs. This flooring has a color proofing according to the pavement color. Such as natural wood, our floorings may lose some color with the passage of time, thus reducing the nuances of colors.

MAINTENANCE

The contact with the environment (pollen, dust, leaves and plants, the presence of minerals in the soil, etc.) can cause stains on the surface of the flooring. Cleaning should always be done with low pressure water and a soft brush. It is strictly forbidden to use acid or alkaline products, solvents or others which deteriorate the concrete as these may cause irreparable damage to floorings. Don't use metal objects (e.g. a shovel) to remove waste or objects on the floorings. Use a hard bristle broom to clean the slabs. Any stain or debris that falls on the flooring must be cleaned right away. Do not leave dead leaves on the flooring, as these can produce serious stains and / or damage the slabs. For increased durability of the slabs it is advised to use water repellent.

COMPLAINTS

It is recommended to check the conformity of products before installation. Any complaint about the appearance, color, dimensions or visible defects in the product will not be accepted after the installation of the same. In all cases, the guarantee is limited to the replacement of products recognized as defective, excluding the application values.

WEIGHT AND DIMENSIONS

The weight and dimensions given in our tables and catalogs are nominal values.

They may vary slightly, depending on the characteristics of natural materials and manufacturing processes.



MAINTENANCE PRODUCTS



Colorless Water
Repellent Neutral Effect

Application on:
MOD. 251 MOD.
293 MOD. 315
MOD. GR 522 / 2
MOD. GR 635 / 2
MOD. GR 72 / 2
MOD. GR 72 / 4

After application, we recommend the use of a water repellent on the slabs.

APPLICATION ADVICE

SOIL PREPARATION

Sub-foundation

Start by digging the implantation area to find a stable ground and the ideal depth, taking into account that this depends on the thickness of the base and the type of soil. To ensure correct drainage, it is recommended to apply a geotextile fabric. Normalize the soil, with a layer of crushed stone or Pit-Run gravel and compact with a vibrating plate. Later, if necessary (for example, in the case of clay soils), stabilize the soil with a layer of crushed stone or Pit-Run gravel from 5 to 15 cm and compact it. In the end of this process, the base should be chosen according with the application type (rigid, mortar and/or sand/gravel base).

APPLICATION MODE

Slabs	Application			
	Application on rigid base	Application on mortar	Application on sand	Application on gravel
MixCrete 18mm thickness	X	X		



APPLICATION ADVICE

APPLICATION ON RIGID BASE

(DOUBLE GLUING)

Rigid base

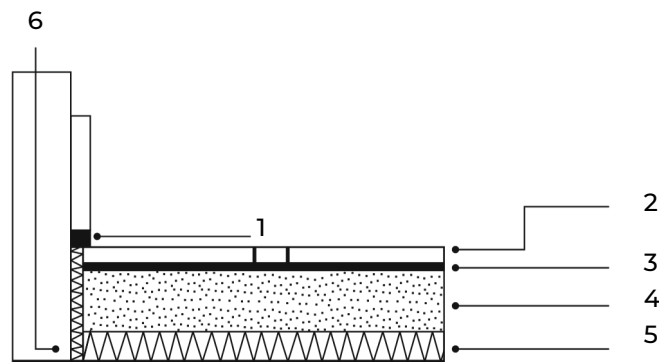
The rigid base should have a minimum slope of 1.5 cm/m, allowing good drainage and preventing still waters. The flatness tolerance is 5 mm under a 2m ruler. Expansion, retraction and support construction joints must always be respected. The concrete based application surface must have a minimum drying time of 28 days.

Reference documents

NF DTU 52.2

Application

It is mandatory to apply these slabs with "C2 class" flexible adhesive cement, and it is also required the application of the adhesive cement in the inner face of the slabs (double gluing). The adhesive cement is applied on the support with the aid of a float trowel and distributed with a notched trowel (half-moon Ø 20 mm). The products can be "pressed down" (with hand or with a soft hammer) to provide the crushing of glue slots. Randomly raise a piece to check the good adherence of the slabs. Clean appropriately and quickly the excess of glue cement on the visible part of the slabs. After drying, these residues are difficult to remove.



Legend

1 Joint / Skirting
2 Slabs
3 Adhesive cement

4 Mor tar
5 Insulating sublayer
6 Peripheral joint

Application on internal soils



APPLICATION ON MORTAR

Mortar base

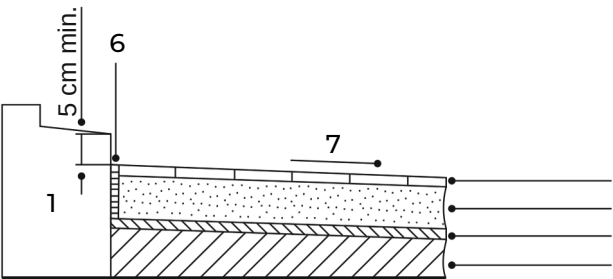
Make a mortar floor screed with a thickness of 4cm to 8cm.
Create a minimum slope of 1.5 cm/m towards the outside of the house. It will allow good drainage and prevent still waters.

Reference documents

NF DTU 52.1

Application

The mortar should be spread, stretched with the help of a ruler and possibly compacted with a trowel. Then, spread a cement paste over all the surface of the mortar. The application of the paste can be substituted by a pure cement powder, followed by humidification. Afterwards, you can smooth it with a shovel or pass a notched trowel to form grooves. The slabs are applied on fresh mortar or humidified cement powder.



- Legend
- 1 Concrete limit

2 Inclined concrete support

3 Drainage

4 Mortar

5 Slabs

6 Peripheral joint

7 Minimum inclination of 1,5 cm/m

Application on external soils





SLABS MixCrete

DECLARED PERFORMANCE - MixCrete POLISHED

Essential Characteristics	Performance			Harmonised Technical Specification
	Internal Flooring	External Flooring		
Emission of asbestos	Pass	Not Relevant		EN 1339:2003+AC:2006
Slip/ Skid Resistance	30	30		
Thermal Conductivity	1.24 w (mk)	Not Relevant		
External fire performance	Not Relevant	Not Relevant		
Durability	Satisfactory	Satisfactory		
Reaction to fire	Class A1	Not Relevant		
Breaking Strength	Minimum Strength	Class	Marking	
	≥ 5 MPa	3	U	

DECLARED PERFORMANCE - MixCrete HAMMERED / ANTISKID

Essential Characteristics	Performance			Harmonised Technical Specification
	Internal Flooring	External Flooring		
Emission of asbestos	Pass	Not Relevant		EN 1339:2003+AC:2006
Slip/ Skid Resistance	Satisfactory	Satisfactory		
Thermal Conductivity	1.24 w (mk)	Not Relevant		
External fire performance	Not Relevant	Not Relevant		
Durability	Satisfactory	Satisfactory		
Reaction to fire	Class A1	Not Relevant		
Breaking Strength	Minimum Strength	Class	Marking	
	≥ 5 MPa	3	U	



WWW.TNCSURFACES.COM

MORE INFO:

Town & Country Surfaces

230 Fifth Avenue
Suite 1714
New York NY 10001

General Inquiries:

info@tncsurfaces.com
Phone: 212-679-0312





TECH.INFO

TECHNICALFEATURES
SLABS